

FREE!



Chairman of the Boards BRUCE DESHANO
Vice Chairman of the Boards NICK DESHANO
Editor MARK ROMANACK

Volume 20, 2013

The **OFF SHORE** RELEASE

Your leader In Trolling Technology www.offshoretackle.com



Printed by Michigan Web Press

Inside

Tips, Tricks and Techniques
brought to you by
Your Leaders In Trolling Technology,
Off Shore Tackle LLC and Riviera Trolling Systems



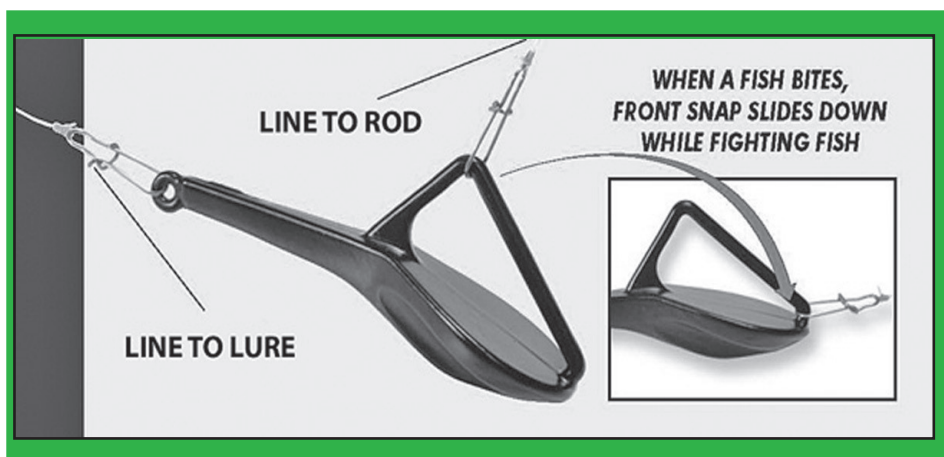
SCAN. TROLL. CATCH FISH.

TADPOLE DIVERS BEYOND THE BASICS

BY MARK ROMANACK

The Off Shore Tackle Tadpole (aka OR36 1 & 2) are rapidly becoming a mainstream trolling aid for anglers who fish spoons, shallow diving crankbaits and crawler harnesses to target suspended walleye, trout, salmon, steelhead and stripers. What makes the Tadpole so popular is they are easy to use and help anglers achieve significant depth at all popular trolling speeds. These diving (non-directional) planers also have about the same drag in the water as a crankbait, making them ideal for partnering with in line boards like the famous OR12 Side Planer and even the OR34 Mini Planer Board.

To use a Tadpole, simply attach the provided snap to the end of your fishing line, clip the snap to the tow arm of the Tadpole and add a four to six foot leader to the back of the Tadpole using the provided coast lock snap. At the terminal end add a snap swivel or snap and then complete the rig by attaching a favorite trolling lure or harness.



The snap tied to the main line slides up and down on the tow arm. Simply drop the Tadpole into the water on slack line and the snap will slide into the elbow of the tow arm. At this point the Tadpole is ready to start diving. Play out the appropriate amount of line to achieve the required depth. To aid anglers in dialing in the right depth, a Precision Trolling Data Dive Curve for the Tadpole divers is available free on the Off Shore Tackle web page under the Dive Charts section. This complementary Dive Curve shows three different common trolling speeds, the most common trolling lead lengths for both the No. 1 and No. 2 sizes of the Tadpole.

One of the biggest benefits of the Tadpole is their fool proof and simple design. When a fish is hooked the snap is pulled to the forward position on the tow arm, converting the diving Tadpole into an in line weight that is easy to reel in. The only thing the angler fights is the fish!

For a wealth of trolling situations the No. 1 or No. 2 Tadpole easily dives to the depths most commonly targeted for walleye, steelhead and other shallow water species. To target species like salmon that favor deeper depths, the Tadpole can be combined with lead core a sinking line commonly used in trolling applications.

TADPOLES AND LEAD CORE

Combining the use of a diving Tadpole with a sinking line like lead core is a great way to increase the diving depth of these trolling sinkers while targeting species that routinely hang out 40 to 60 feet below the surface. The best way to rig up a lead core/Tadpole combination is to designate a reel to be equipped with either 5 or 10 colors of lead core line, suitable amounts of backing material and 30-50 feet of leader material.

Start by spooling on a monofilament backing material. For walleye and other smaller species 10-15 pound test line is ideal for backing. For trout and salmon a backing of 20-25 pound test is recommended. Follow up by tying the backing material to either 18 or 27 pound test lead core line. For walleye trolling 18 pound test lead core is adequate. For trout and salmon select 27 pound test lead core line.

Spool on either five colors (165 feet) of lead core line or 10 colors (330 feet) and then add a 30-50 foot fluorocarbon leader. For walleye fishing 15-17 pound test fluorocarbon leader is ideal. For trout and salmon fishing 20-25 pound test fluorocarbon

leader is recommended.

At the terminal end add a No. 1 or No. 2 Tadpole diver with a four to six foot leader attached to the back and finish the rig with the lure or harness of your choice.

REELS FOR LEAD CORE

Because lead core line is fairly thick in diameter it takes a pretty good sized reel to handle 5 to 10 colors of this sinking line. A 45 series level wind reel will easily handle 5 colors of lead core, adequate amounts of backing material and suitable leader. For fishing 10 colors of lead core a 55 series levelwind reel is required to handle the necessary backing and lead core.

Fast retrieve ratio reels make fishing long lengths of sinking line more convenient. These reels feature a 6:1 gear ratio instead of the standard 3:1 gear ratio found in most levelwind trolling reels.

PAIRING LEAD CORE WITH BOARDS

To fish a Tadpole and lead core line set up in combination with the OR12 Side Planer, simply let out the lure, leader and lead core line. When the backing material reaches the rod tip, clip the OR12 onto the line using both of the provided line releases.

Once the OR12 is attached to the line, drop the board in the water and play out line until the board has reached the desired distance away from the boat. For most trolling applications stacking two planer boards per side of the boat works best.

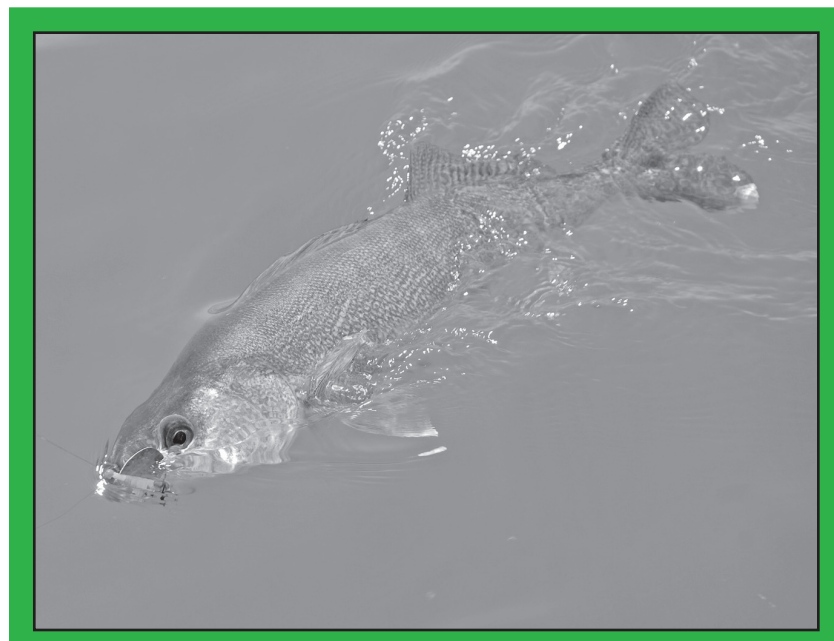
Position deeper running lines on the inside board and more shallow running lines on the outside boards to avoid having to clear lines when fighting fish. A Tadpole in combination with 5 colors of lead core line will fish 30-40 feet down. A Tadpole in combination with 10 colors of lead core will fish about 50-60 feet down.

SUMMING IT UP

Tadpole divers are one of the easiest ways to fish spoons and other non-diving trolling lures at depth. Add lead core line to the mix and the depths these trolling aids can achieve skyrockets!

Even better, combining the Tadpole and lead core line still allows anglers to use in line boards like the famous OR12 Side Planer. For species including lake trout, salmon and stripers that are commonly found in deep water, getting deep and out to the side of the boat is the fast track to trolling success.

The same applies for Lake Erie's Central and Eastern Basin walleye anglers who commonly troll in deep water searching out trophy class fish around the thermocline. The applications for the trolling with Tadpole divers are simply limitless.



COMPANY MISSION STATEMENT

Our company's foundation is based on presenting products to the consumer that result in a more productive fishing experience by using the best materials available that are as eco friendly as possible. We have always set our standard's high for our consumers to have the best results. Our products are "Often Imitated but Never Duplicated". This is why Off Shore Tackle Company LLC remains, "Your Leader in Trolling Technology".

BEGINNERS ON BOARDS

BY THOMAS ALLEN

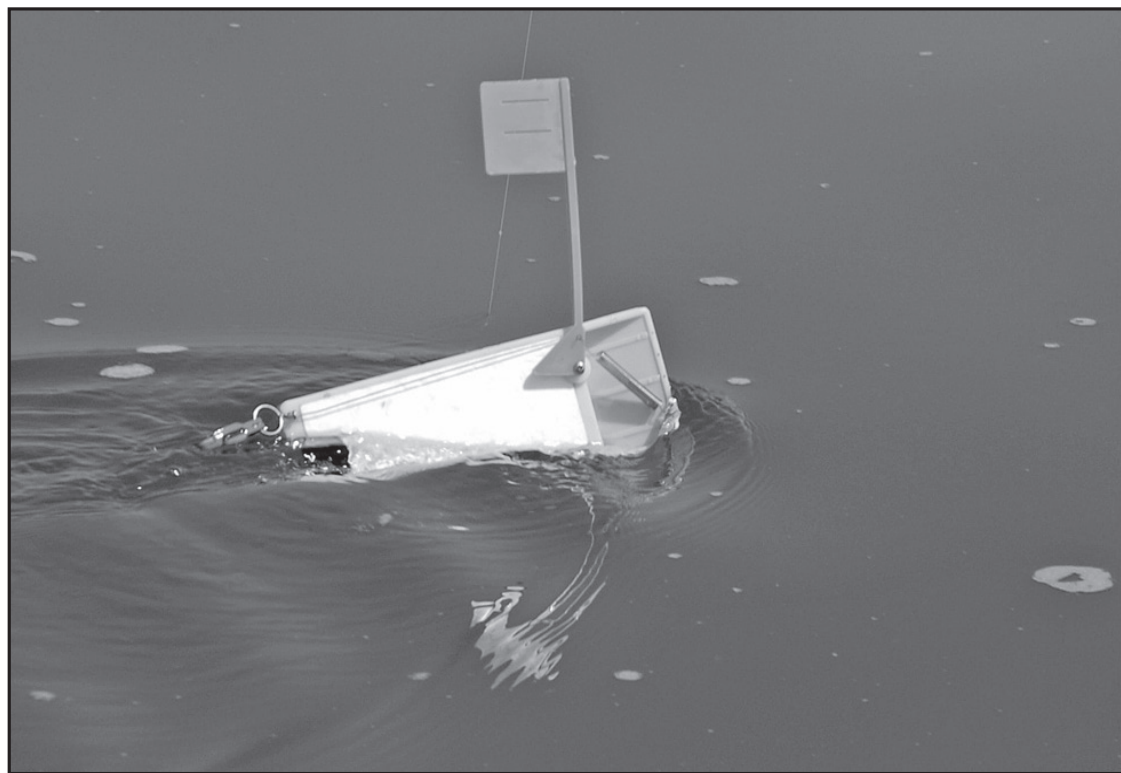
We could talk Off Shore planer board basics and how to initially incorporate them into your trolling arsenal, but chances are fair that if you're reading this that is a topic already understood. However, what we are going to look at is how this very tactic might be the best approach to getting the next generation involved in the sport of fishing.

As dedicated anglers, many of us started with a worm and a bobber. But, really what's the difference between a red and white bobber hanging a piece of bait in the strike zone and a yellow OR12 Off Shore Side Planer board topped with an OR12TF Tattle Flag pulling minnow/crawler harness or even a crank?

Truth be told, the little boy or girl in each and every one of us loves that feeling when that bobber begins to dance. Have we grown from that point? Sure, but not past it. When it comes to sharing our passion for fishing with our children, there might not be a better way to get them hooked, (pun intended) than through the science of planer board trolling.

Off Shore Tackle pro, Tommy Skarlis subscribes to the mentality that kids need positive fishing action during their development as young anglers. "It's not a greedy mentality either; it's about piquing their interest right away and feeding it with fighting fish. Trolling with planer boards is a great way to produce the exact scenario that every child will love."

With two young boys of his own, Skarlis knows they enjoy every aspect of the fishing outing from riding in the boat to bait "management" to rigging up lines, but the way he cultivates their desire to get out again is by putting ample fish on the end of their line.



"They have to experience success early on in order fully realize why they are out there in the first place," says the 2012 FLW Walleye Tour—Red Wing, Minnesota Champion. "The kids can only get so much dirt on your PowerBait and you definitely don't want them playing in the Gulp, which is precisely why they need something like a bright yellow, Off Shore planer board to watch. Off Shore's planer boards being pulled behind the boat put a whole new dimension in fishing with the younger generation."

"The way you get kids to love the sport of fishing is through catching fish, Skarlis states. "As they age and mature as anglers, they will then learn to appreciate the whole experience, but early on—now—it's about catchin'. Another great aspect about getting the kids in the boat, especially in a one-rod state like Minnesota, you can run more lines with more kids in the boat, thus creating more opportunity for them to reel in fish and continue to build their passion."

"With more lines in the water and several short attention-spanned kids in the boat, you can assign each of them 'their' planer board to watch and I can promise you that it will captivate them," he continues. "It gives them ownership and responsibility, which kids crave. Now if their board goes back, imagine the added excitement."

Skarlis also notes that its vital to make sure the field is set to catch the most fish possible so each young angler has the same opportunity. This is where your prowess as an angler is essential to figuring out the pattern and adapting effectively so all the red OR12TF Tattle Flags go back equally.

"With kids, the action is where it's at," he says. "Quick, fast and lots of it. You want there to always be something to do or watch that will keep their attention. With Off Shore planer boards, this is precisely what happens, especially with an OR12 Tattle Flag Upgrade Kit added on."

"This is not an expensive game to get into, either," he says. "You can use all your standard trolling equipment, and the necessary hardware for all kinds of rigging is generally very affordable, especially Off Shore's available planer boards and accessories."

"Look, it's simple, kids are our future," Skarlis says. "If we don't invest in their future as anglers, everything we are working to accomplish is for naught. Getting them out there is the first task, and a pretty easy one. But keeping them coming back is the key, and the secret to that is a lot of fish on the lines."

Take part in getting the next generation on the water and putting slime on their hands. The outcome will not only be a permanently impacted new or young angler, but you might find the young kid inside of you really enjoys stepping back to the bobber and worm days when it all began for you.

NOT JUST FOR BIG FISH

Skarlis also recommends targeting any and all species with kids on board because they don't care what is tugging on the other end—they care about the fact that something is pulling on the other end. With the multitude of Off Shore Tackle products, trolling for other species is a breeze.

"Let's be real, walleye and salmon don't always cooperate and it may be easier to adapt your presentation for the other fish in the system," he explains. "By selecting a small crawler harness or even a No. 4 Salmo Hornet being pulled behind Off Shore's OR34 Mini Planer, this is a subtle approach that will work wonders on bluegill, crappies, bass, white bass or whatever!"



Big water predators like salmon and walleye are fun to catch, no doubt about it, but when it comes to getting your kids hooked on fishing, Skarlis suggests the trolling approach—for all species.

ADDING ACTION

BY MARK BRUMBAUGH

Fish of all species can be triggered to strike a lure by adding quick variations in speed and location in the water column. This is easy to achieve when casting, but not so simple when trolling, especially in calm seas. Fortunately with the use of Off Shore Tackle's OR20 Pro Weight System in conjunction with the OR12 Side Planer boards, you can add forward, back, up and down momentum to any crank bait or spinner harness.

By adding a 1 to 3 ounce Pro (AKA Guppy) Weight (use the lighter weight for smaller shallow diving lures that don't pull as hard and the heavier weight for deep divers that pull hard) 20 to 30 feet ahead of the lure, then troll in a zigzag (sharp left to right) pattern, the weight will rise and fall as the board speeds and slows. This also adds up and down movement and varied speed to your offering. Try it next time you're marking fish on your sonar, but not getting hit. More than likely, you will be pleased with the results.

TADPOLE TIP

When using wire or lead core, add an OR36 Tadpole to the mono leader and then 6-8' of line from the Tadpole to the lure. Use the dive curve chart (available at www.offshoretackle.com) and only count the length of the mono. Example: On a 50' lead, an OR36 2 Tadpole will add 15' to the total depth.

SIDE PLANER TIP

When fishing where you will be going both upwind and downwind, remove the release from the bracket and put a split ring on it and then reinstall the split ring on the bracket. Letting the release run loose allows the board to follow the waves better when going upwind.

SWIVELING ROD TOWER

BY LARRY HARTWICK

New for 2013, Riviera Trolling Systems Inc. is producing a new Swiveling Rod Tower (SRT). While rod towers or trees as some refer to them aren't new, the design and function of the SRT - Swiveling Rod Tower takes them to a whole new level.

First, the unit incorporates our proven Riviera base that allows the tower to swivel and lock up every 90 degrees. Removal of the tower is as easy as pulling out a spring loaded pin and lifting. A 3 second chore or lack of being one.

Second, the same tower can be used in either a port or starboard application as the rod holders can be used on either side of the tower.

Third, ALL of the rod holders are adjustable in 15 degree increments, so you could have 0 degree, 15 degree, 30 degree, 45 degree, and 60 degree rod holders on one rod tower. This will allow for great separation of your rods and eliminate confusion and tangles.

Forth, utilizing both sides of the tower, up to 7 rod holders can be used on a SRT. The SRT will be initially available in 3 rod, 4 rod or 5 rod versions. However, additional rod holders with the indexing brackets will be available for customizing your SRT.

Fifth, there are no welds to worry about. Every rod holder angle is adjustable.

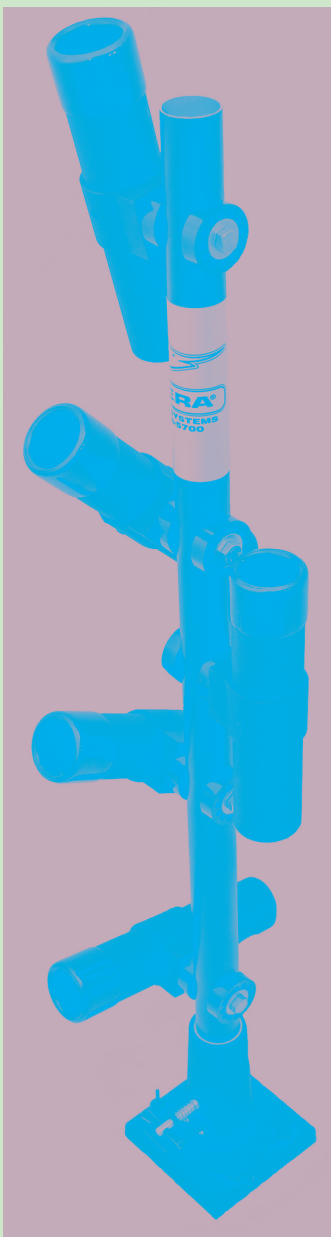
Sixth is strength. No wimps here. I stood on the end of a 60 degree rod holder with no ill effects to any component. If it will hold my 240 lb weight on a rod holder end, there won't be any concerns about placing an expensive rod and reel combo in it.

Seventh, we are producing an adapter so it can be slid into an existing track. Easy on and off with positive holding power. The only limiting factor will be the track.

Eighth, all of our aluminum components are powder coated for years of good looks and function.

SUMMARY

Whether you are using in line planers or dual and triple planer boards, the Riviera SRT will out perform anything else available on the market. Check it out, you'll love it! It was designed with the help of a Wisconsin friend that wanted something better and I think that you'll agree; IT IS.



Riviera's New Swiveling Rod Tower, shown here is their SRT5 which has 5 rod holders that are adjustable every 15 degrees.

FISHING REPORT FROM A HAPPY ILLINOIS CUSTOMER

BY HOWARD HEATHERWICK

Back on May 4, 2012, I had a great walleye fishing trip with guide Dale Stroschein of Sturgeon Bay, Wisconsin. We trolled Green Bay and it was my first introduction to Off Shore OR12 Side Planer Boards. By the way, Dale is a big fan of your products!

I came back to Bloomington, Illinois and invested in one OR12L Side Planer and a new line counter reel and rod set. One rod and one planer board was all I could afford at the time as I retired a year ago and am just now starting to fish much more.

On June 8, 2012, my partner and I went fishing on a local Lake Evergreen that our DNR reports holds the state record saugeye. We were set up using the OR12L Side Planer rigged with 12 pound clear blue fluorescent line trolling a Berkley Flicker Shad. I did not use a steel leader and only had a swivel snap as I was fishing for saugeye. I caught a few saugeye (but they were all under the legal 14" size) and two hybrid stripers, one of which was about 2 pounds.

Then at about 1pm in the afternoon trolling in 17-20' of water on a clear windless day, I noticed the board starting to pull back and jerk. It never went under or veered much from side to side so I thought it was another saugeye or striper. Both clips stayed attached and fixed in the original Pro Method factory setting. I had the second release moved to the second hole setting after reading your instruction sheet and knowing we were going slow.

I reeled in the 125' of line upstream of the board and easily removed the board. The 45' of line still between the board and the lure was slack so I thought the fish pulled off. I started reeling and as soon as the slack was removed the rod tip bent and the fish on the other end took several strong runs and I knew I had the biggest freshwater fish of my life on the line. When I finally got it near the surface it was obvious I'd hooked a huge muskie. My fishing partner, whose small boat and 10hp motor we were using that day, tried to net the muskie but on the first pass we saw his net was at least one foot or more shorter than the fish and it lunged back out and dived under the boat. I was running the motor and shut it off while giving and taking line till we got the fish back to the surface and this time I held the rod tip up as the fish came close so it went head first into the net and we got it in the boat. The fish measured a legal 48" long and maxed out my scale which only went up to 28 pounds. I believe the muskie weighed about 35 pounds. This was the biggest muskie I ever caught in my 67 years of life and too nice of a fish to kill, so after a few cell phone photos (as I did not have my good camera with me of course) we released the fish.

It took us about 45 minutes to review the almost totally spent fish. We had the best success slowly moving the boat forward and coaxing the fish to swim guided by the landing net placed over the tail section. She finally dived deep to cooler water and did not surface again. We waited quite a while to make sure the fish would survive and while doing so I re-rigged with a new shad as the chartreuse one had bent hooks on the tack and one barb missing on the front. We trolled back to the docks and on the way caught another saugeye. What a fishing day!

SUMMING IT UP

I just wanted to tell you how much of a fan I am of Off Shore Planer Boards. Without your board, the Flicker Shad, and the set up Dale showed me, I would not have landed the freshwater fish of my lifetime. Thank you for making this product!



Howard Heatherwick shows off the biggest muskie catch of his young 67 years that he caught using Off Shore Tackle products.

TADPOLES AND SLOW TROLLING SPEEDS

BY MARK ROMANACK

The (OR36 Series) Tadpole diver is one of the most simple, but useful trolling aids to hit the market in decades. These non-directional diving planers dig like a crankbait and achieve considerable depth because they are negatively buoyant.

Ideal for fishing spoons, harnesses and shallow diving crankbaits that would not otherwise achieve suitable trolling depth on their own, the Tadpole is easy to rig and even easier to use.

RIGGING UP A TADPOLE

The Tadpole comes supplied with two snaps in the package. Take one snap and tie to the end of the fishing line, then clip that snap over the tow arm on the Tadpole.

Attach the second snap to the back of the Tadpole and add a four to six foot fluorocarbon leader. At the terminal end, add a snap for fishing crankbaits or a snap swivel for fishing spoons, harnesses or spinners.

Once rigged, add your favorite lure or harness to the leader rigged at the back of the Tadpole. Drop this rig into the water on slack line and the snap will slide into the elbow of the tow arm setting the Tadpole to start diving. By simply playing out line the Tadpole can be targeted to a wealth of trolling depths.

When a fish is hooked, the snap on the tow arm pulls forward converting the diving Tadpole into an in line weight that has very little resistance in the water. This unique feature allows anglers to stack two or more Tadpoles per side of the boat using planer boards without fear of tangling lines.

SLOW SPEED TROLLING

The Tadpole can be used at a wealth of trolling speed and lure types, but one of the most popular combinations is slow trolling for walleye using nightcrawler harnesses

or what are often simply called “spinners”.

Because Tadpole divers sink, they are speed dependent and achieve greater depths at slower speeds ranging from 1.0 to 1.5 MPH. This feature allows anglers to troll at significant depths using only modest lead lengths making Tadpoles more efficient to use than keel sinkers, rubber core or other similar trolling weights.

Paired up with spinner rigs, Tadpoles are deadly on open water walleye. Especially useful in the Great Lakes and other bodies of water where walleye frequently suspend in the water column, Tadpoles can be aimed to specific depths much the same as crankbaits. By manipulating the lead length or feet back a Tadpole is set behind the boat, the running depth can be easily dialed in to the depth fish are being seen on a sonar unit.

The www.offshoretackle.com site provides a free Tadpole Dive Curve provided courtesy of Precision Trolling Data, LLC. Dive Curves for both the OR36 1 and OR36 2 Tadpoles at various trolling speeds are provided as a free download.

MORE TROLLING TIPS

For the best results trolling crawler harnesses in combination with Tadpole divers, it's recommended to troll with monofilament fishing line in the 10-15 pound test range. Select harnesses that are 48-72 inches in length. The best open water trolling harnesses are tied using 15-17 pound test fluorocarbon line and No. 2 beak style hooks or No. 6 treble hooks.

Colorado and Indiana style blades are the most popular, but at times willow leaf blades are also productive. Plastic quick change style clevises allow blade size, type and color to be rapidly changed without having to cut and retie the harness.

Colorado or Indiana style blades enjoy good rotation and flash even at the slower trolling speeds. The shape of these blades allows them to rotate easily even at the

slowest trolling speeds.

Unfortunately, at faster speeds Colorado and Indiana blades can lead to line twist issues. It's best to control the upper limit of trolling speeds with these blades to 1.5 MPH.

For anglers who wish to troll a little faster, try using willow leaf blades that rotate at an angle closer to the leader and eliminate line twist issues at faster trolling speeds. When trolling willow leaf blades many anglers rig two or more blades on the harness to increase flash and vibration.

One trick for fishing multi-blade harnesses is to rig a larger blade on the forward end of the harness, then add a few beads as spacers followed by a second and slightly smaller blade. This rigging configuration insures that both blades will make clean contact with the water and rotate smoothly. Two blade harnesses produce more flash and vibration and they also allow anglers the option of incorporating different colors into the presentation.

For high speed spinner trolling it's a wise idea to beef up the leader material. Rather than the normally adequate 15-17 pound test fluorocarbon leader material, it best to tie speed trolling spinners using 20-25 pound test fluorocarbon leader.

SUMMING IT UP

The advent of the OR36 Series Tadpole has opened up a whole new dimension in trolling for walleye enthusiasts who spend a lot of time trolling at slower speeds and for suspended fish. The Tadpole shines as a depth controlling device and can be used with a variety of lures, but it's hard to beat the results enjoyed when Tadpoles and walleye spinners are paired up.

No matter what size or type blade that's used or trolling speed employed, Tadpoles rock as an open water walleye trolling tactic.

BIG PIKE TIP-UP RIGGING

BY ARIK KOHMAN

I spend more time chasing pike through the ice than walleye. I'm always hunting for “The Big One” and often set at least one flag with a giant golden shiner or an eater size perch to tempt the Green Meanie. The problem with big lively bait is that it'll trip a false flag constantly. My solution has been to use an OR10 Off Shore Release on my tip-up to keep the meat from running away. It seems to work real well although a false flag is still possible but quite rare.

OLD DOGS

BY THOMAS ALLEN

Whether a technique has been around a while or it's fresh on the scene, being willing to try something “new” could put your current tactics on the fast track to a full livewell!

We've all heard the phrase, “can't teach an old dog, new tricks.” I don't buy that at all. I'm not an “old dog” (yet), but my willingness to learn something new isn't going anywhere. I know many anglers belonging to the next one or two generations that are also eager to adapt with rapidly advancing technology—they accept it, almost like a challenge.

On the other hand, I can understand

that a few “old dogs” might be tired and not that interested in applying new-fangled equipment or tactics to what already works for them. Fair enough! However, occasionally new products or advanced new ways of approaching the same old game come down the pipe and completely redefine how we tackle some of fishing's biggest challenges. I, for one will adapt. Will you?

Speaking of old dogs, Tommy Skarlis is a veteran walleye pro, hailing from Waukon, Iowa and he has seen so many new things appear in the fishing world that even he admits it can be hard to keep up. But, if you have ever fished a tournament with him, or peeked inside

his boat, you'll see that he runs only the most recent gear and equipment, while still relying on traditional techniques and good, old fashioned gut-instinct.

“I enjoy growing with the rapidly advancing technological age,” he says. “Electronics especially have come so far over the past few years that it amazes me! But, tackle and fishing accessories have also sophisticated at the same rate. When Off Shore Tackle appeared on the scene, they completely changed how people approach their trolling efforts, and being of the ‘adapt or die’ mentality, Bruce and Nick DeShano have vowed to keep Off Shore Tackle ahead of the trolling curve.”

The 47 year old Skarlis has been fish-

ing professional walleye tournaments for close to 25 years and believes that to remain competitive in, not only today's tournament scene, but also fishing in general you have to be receptive. There was an instance when Bruce DeShano, founder of Off Shore Tackle, helped Skarlis implement a new strategy into his competitive walleye arsenal, which has now become a go-to tactic at tournaments where trolling is key to weighing limits.

“The Off Shore (OR36 Series) Tadpole was a little foreign to me early on,” he says. “At first, it was hard for me to break that old, dull routine that I was constantly fishing under.

CONTINUED ON PAGE 19



CHANGING RELEASE PADS

BY MARK ROMANACK

Even the best designed and built products eventually wear out. In the case of the Off Shore Tackle's many models of pinch pad style line releases the rubber pads wear over time and must be eventually replaced. How often these pads will need to be replaced depends on how much service they see. The average angler will enjoy several seasons of fishing before the pads need to be replaced. Charter captains who use their releases on a daily basis will typically have to replace the pads every other year.

False releases are a dead giveaway that the rubber pads are wearing thin and need to be replaced. Downrigger and stacker releases take the most abuse and generally must be replaced more often than planer board style releases.

The task of replacing these rubber pads takes a few minutes and requires only common household tools and adhesives. There are four different replacement pad types that correspond to the respective line releases. The ORRP16 replaces the pads in the OR10, OR14 and OR19 releases. The ORRP16HL replaces the pads on the OR16 Pro Snap Weight Clips. ORRP8 replaces the pads on the OR1, OR2, OR3, OR4, OR7, OR8, OR17 and OR30 releases. Last but not least, the ORRP8SN replaces the pads on the OR18 Snapper Release.

REMOVING THE WORN PADS

The process of replacing the rubber pads starts by removing the worn pads. Take a pair of vice grips and squeeze open the release so the jaws remain open. Using the tip of a flat tip screwdriver, pry out the old rubber pad. The old pads typically pop right out with just a little effort.

ADDING THE GLUE

The new pads will need to be glued into place. Ordinary household Super Glue is the best adhesive for this job. Place one small drop of Super Glue in the pocket that houses the rubber pad.

POP IN A NEW PAD

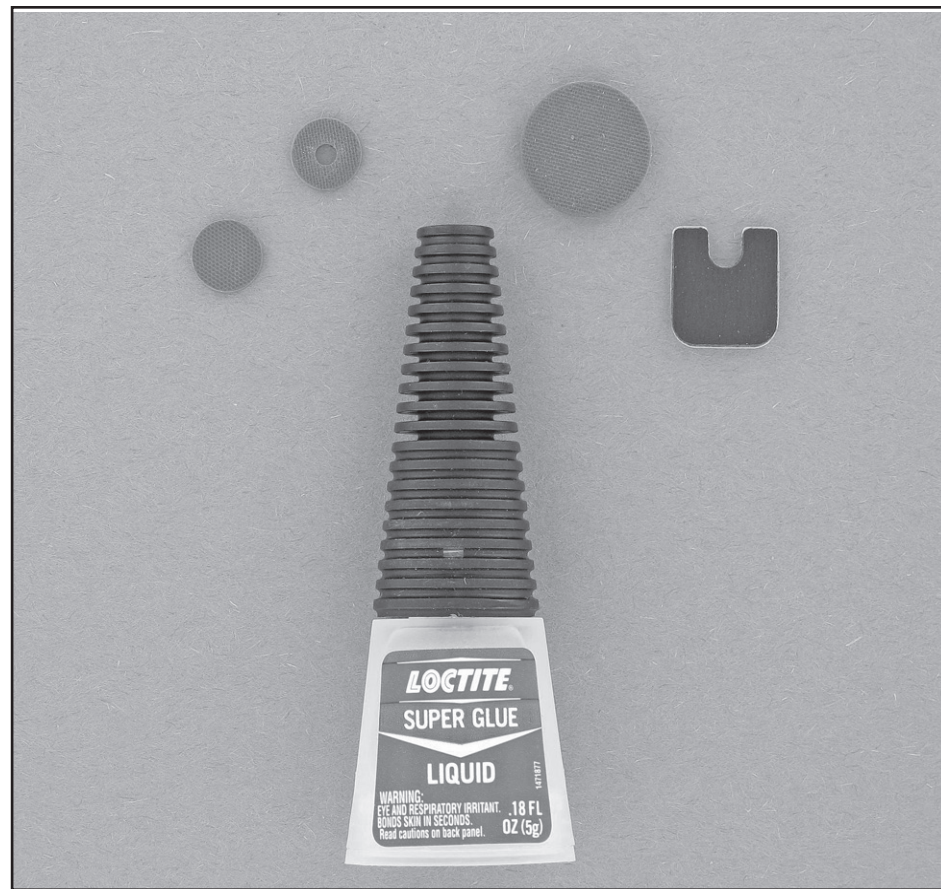
Once the glue is in the pocket, slip a pad into place. Flip over the release and repeat the same process on the other side. Once the two new pads are in place, remove the vice grip so the release applies pressure onto the rubber pads. Let the glue dry a few minutes before putting the release back into service.

CAUTION

A little Super Glue goes a long way. A small drop is all it takes to securely hold the rubber pads in place. If too much glue is used, excess will leak out and potentially glue the release pads permanently closed.

SNAPPER RELEASE

The OR18 Snapper Release functions a little differently than the other Off Shore Tackle line releases. The Snapper is cam operated instead of spring operated. To open the release simply flip open the cam lever on the top of the release. This exposes



both the top and bottom jaws of the release. The pad on this release style is adhesive backed. Using a flat tip screwdriver, pry out the old pad and then peel back the adhesive tape on a new pad and press it into position.

SUMMING IT UP

The replacement pads for all Off Shore Tackle line releases are inexpensive and easy to replace. Taking the time to replace the pads periodically guarantees that your Off Shore releases will function flawlessly and provide years of trouble free service. Most dealers stock replacement pads, but if you have trouble finding them these parts can always be ordered directly from the factory by visiting www.offshoretackle.com.

TIP

When storing your releases for long periods, place a piece of cardboard between the pads to keep them from sticking together and being pulled off.

PLANER BOARD BASICS



Successful walleye tournament pro, Keith Kavajecz, shows how using Off Shore Tackle products results in a successful catch every time.

BY KEITH KAVAJECZ AND GARY PARSONS

As Professional Walleye Anglers, we are regularly fielding questions about different walleye techniques, at sport shows, tournaments, on our website Forum page, even on social media like Facebook. One area of particular interest to many anglers is fishing with in line planer boards. Any walleye touring pro will tell you, they don't leave home without 'em. Boards aren't the answer for every walleye fishing situation, but they are an impor-

tant to set the rod holders so that the rod tips are high in the air in order to keep the line off the water as much as possible. The board itself can play a major part in how far out you can run it. A ballasted board like the Off Shore OR12 Side Planer is much less likely to "roll" as it's being deployed and once its set, the ballast keeps the board in an upright position, keeping more planing surface in contact with the water. This feature also keeps the boards level and "waiting" when the boat is put in neutral

tant tool for every walleye angler's arsenal.

Here we will answer some of the most commonly asked questions we get regarding fishing with in line boards.

Q: How far out can you run in line boards and still have them run effectively?

A: Spreading lines out to cover more water effectively is the main reason for using boards. Often, in calm water conditions on big water, we will run boards as far as 150 to 200 feet off to the side of the boat. This requires the right equipment. You can't use wimpy rods; it takes good strong rods 7 1/2 to 8 1/2 feet long with plenty of backbone. When running boards that far out it's impor-

tant to fight in a big fish.

Under rough water conditions the "spread out" mindset is reversed. Wave action hides your boat presence so subsequently it is possible to bring the boards in closer. In fact by keeping the boards close you'll maintain much better control over your trolling set. The boards are much easier to read and when a walleye bites there is much less line out increasing the chances of boating your fish. Remember, in rough water it is always desirable to keep the fight to a minimum, because the wind will push your boat faster than normal which consequently puts more pressure on the fish. Minimal fight decreases the chances of torn walleye lips... the end result will be more boated fish!

Q: Can you run pro snap weights, in line weights or lead core line with boards?

A: Yes and no. Off Shore OR12 boards can handle the extra weight of Pro Snap Weights and in lines (like those in Off Shore Tackle's OR20 Pro Snap Weight System) up to 3 ounces. Weights heavier than 3 ounces tend to tip or sink the board causing it to not run effectively. You can run as much as 10 colors of lead core behind a board, provided you use a backing of mono or Fire Line to the board itself. Attaching the board to the lead core directly will again cause it to tip and not run correctly.

Q: When running multiple boards on one side of the boat, how do you get a fish in on the outside board without tangling with the inside board?

A: This is one of the trickiest parts of running boards, and is probably the one thing that frustrates many

CONTINUED ON PAGE 6

PLANER BOARD BASICS — CONTINUED FROM PAGE 5

novice “board” anglers more than anything else. How you retrieve the fish and handle the other boards all depends on the situation. The easiest scenario is on open water, when you get a fish on the outside board. In this situation its fairly simple to quickly reel in the inside board (known as “clearing the board”) and put the board (still attached to the line) in the boat’s splash well letting the lure trail straight behind the boat. Lay the rod on the floor and proceed to reel in the outside board and fight the fish in. You want to be sure to land the fish off to the side of the boat as to not tangle with the trailing line. Once you have the fish in, reset the board that was in the splash well; this now becomes the outside board.

Just keep in mind, things will run much smoother if the boat is left in gear until the board with the fish is detached from the line. That will keep tension on the lines and cut down the chances of tangles. If the fish you are fighting is a really big hog, and you do wish to put the boat in neutral to fight it, ballasted boards like the Off Shore Tackle OR12 Side Planers will remain upright in the water, ready to start fishing again once you land your trophy.

Q: It seems like it can take a long time to set out four or even six board lines. Is there a trick to setting board lines out more efficiently?

A: You bet! The secret is to be setting out at least two lines at a time. Some reels are equipped with a “clicker” feature. This puts enough tension on the line for the board to be set in the water with the rod placed in a rod holder while the reel is engaged in free spool mode, allowing the board to go out “un-attended” while another board line is prepared. Once the board is the proper distance from the boat, engage the reel and you’re fishing. For reels not equipped with clickers, you can accomplish the same thing by loosening the drag on the reels enough to allow the boards to pull the line out. With

two anglers in the boat, it doesn’t take long to put out four or even six lines (where legal). This works well when setting out lines for trolling crankbaits in open water, however, when trolling spinners or even cranks with a weighting system over structure or where snags might become an issue, it’s best to “manually” let the lures out in a slow, controlled manner.

SUMMARY

Don’t get locked into the idea that board trolling won’t work on your favorite bodies of water either. It may surprise you how often we have used boards in places no one thought they were applicable. And not just for trolling crankbaits, but with spinners, bottom bouncers and live bait rigs too.

Running boards is not nearly as difficult or complicated as many anglers think. A little time spent practicing the “basics” of set up and retrieval and you too can be fishing boards like the pros.



DOWNRIGGER RELEASE SAVVY

BY MARK ROMANACK

OR8 HEAVY TENSION DOWNRIGGER RELEASE

The advent of attractor fishing has created a demand for a whole new class of line release. The double spring tension of the OR8 (red) is ideal for fishing dodgers, large or small rotators and paddles, Big Al Fish Flash, meat rigs, gang spinners, lake trolls and other attractors that create considerable resistance in the water.

The OR8 also does double duty as a saltwater release for high speed trolling applications or for trolling large

Off Shore Tackle produces two models of stacker releases including the OR7 (white) for smaller fish and the OR2 (black) for larger fish. Stacker releases incorporate two releases (one attached on a short lead and the second on a longer lead) joined together using a heavy duty snap. The short lead of the stacker release is clipped to the downrigger cable normally 10-20 feet above the downrigger weight. The fishing line for the second rod is then placed in the second (longer lead) release on the stacker. To prevent losing the stacker release, the heavy duty snap clip is also placed around the downrigger cable. NOTE: Make sure you attach the stacker as indicated above or as shown on the product card.

RELEASE TRICKS

A few tricks will help anglers get the most from downrigger and stacker releases. First off, all of these releases are designed to function with either monofilament or fluorocarbon fishing lines. Super braid lines do not function in pinch pad style line releases.

It’s also important to note that how deeply the line is placed in the release jaws plays a role in the function of any pinch pad style line release. Generally speaking it’s best to use a release that has adequate tension and to bury the line near the back of the release pads.

That stated, it’s possible to lighten the tension of a line release by simply placing the line near the edge of the rubber pads. This reduces the amount of force required to trip the release.

A word of caution comes to mind when setting line releases to trip under light pressure. If the tension setting is too light, fish that strike are not likely to be hooked

firmly. Secondly, false releases are bound to happen if the tension setting is overly light.

In the world of downrigger fishing, it’s better to have a release tension that’s a little too firm, than one that’s a little too loose. Extra tension on the line release will help insure zero false releases and also that fish will be hooked solidly.

A final word on downrigger releases is something called the loop trick. The best way to get a crisp release and not sacrifice hooking ratios is to wrap the fishing line around your index finger and wrap about four or five twists into the line. Place the twisted line into the release exposing the loop of line created in the process.

This unique set up guarantees the release will have adequate tension to insure hook sets because there is

CONTINUED ON PAGE 7

A downrigger is the ultimate fishing tool for depth control fishing. Despite the benefits of using a downrigger, these trolling aids have one achilles heel and that boils down to the line release required to make a downrigger function properly.

It’s amazing that fishermen will spend \$1,000.00 or more on a downrigger then expect it to function properly using rubber bands as a line release. The line release is the most critical part of any downrigger set up. If the release doesn’t function flawlessly, the whole reason for using downriggers is defeated.

TENSION IS THE KEY

The key to flawless downrigger function centers squarely on the tension of the line release. If the release has too little tension, fish strike but are not hooked solidly enough to land them. If the line release tension is too heavy, fish are hooked but the angler can’t easily trip the release to fight the fish.

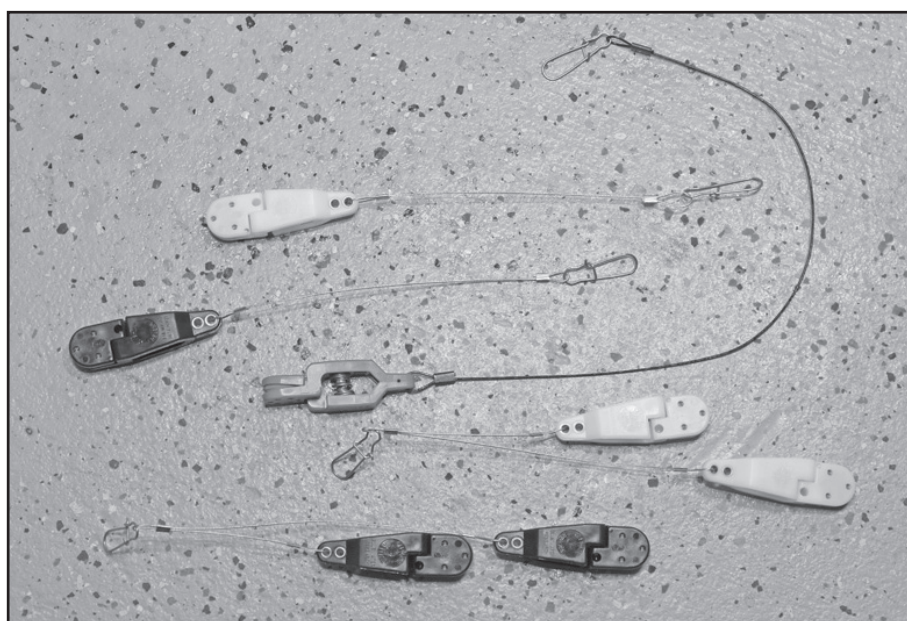
Since no two trolling situations are exactly the same, no single line release can adequately accomplish the collective goals of downrigger fishing. This is precisely why Off Shore Tackle produces an assortment of downrigger single and stacker line releases aimed at catching everything from modest kokanee and trout, to monster king salmon, stripers, muskie and even saltwater species.

OR4 LIGHT TENSION DOWNRIGGER RELEASE

The OR4 (white) Light Tension Downrigger Release was designed with walleye, kokanee and spring coho fishing in mind. This release is also ideal for anglers who troll for lake, brown or rainbow trout living in inland lakes. Ideally suited for fishing with monofilament lines in the 10-25 pound test range, the OR4 functions flawlessly at all common trolling speeds.

OR 1 MEDIUM TENSION DOWNRIGGER RELEASE

The OR1 (black) is the downrigger release that started it all. A general purpose release that functions perfectly for targeting salmon, steelhead and lake trout, the OR1 is the best selling downrigger release of all time. The OR1 functions flawlessly with 10-25 pound test monofilament lines and normal trolling speeds.



Off Shore Tackle offers downrigger releases in light, medium and heavy tensions in both single and stacker versions. Shown here, from top to bottom, are OR4, OR1, OR8, OR7 and OR2 releases.

lures for species like muskie and pike. The OR8 functions flawlessly when used with 20-40 pound test monofilaments.

STACKER RELEASES

Anyone who fishes with a downrigger can get more mileage from these trolling aids by incorporating stacker releases. A stacker release essentially allows an angler to fish two lines from one downrigger. To effectively accomplish this, the downrigger must be equipped with two rod holders, or the boat must have a second rod holder mounted close to the downrigger.

When using a stacker release, the first line is set using the downrigger release on the ball as normal. The second line is rigged using a stacker release that attaches to the downrigger cable at a point above the downrigger weight.

THE ANGLE OF THE DANGLE (WAYS TO MAKE OFF SHORE BOARDS PERFORM EVEN BETTER)

BY ROSS ROBERTSON WITH BRUCE SAMSON

While anglers can't often agree upon much, most trollers will tell you that the Off Shore Tackle OR12 Side Planer is the most versatile planer board on the market. It can be used effectively in countless scenarios, but it can be made even better when paired with the right rod holders, rigged the right way.

PROBLEMS

A rod holder can actually change the way a board runs. If the holder is too low, for instance, the line might angle low in the water and can catch waves during a turn or in a rough chop. When it catches, the line can actually cause the board to surge or stall, which influences the action of the lure. If the water is rough enough, the board can even bury in the wave, which is never good.

SOLUTIONS

Rod holder adjustments should be done to match the conditions. They can be as simple as tilting the holder up to keep the rod tip higher and the line off the water.

Riviera Trolling Systems offer a Swiveling Rod Tower which has multi-rod holder cradles that are available in staggered heights and adjustable degrees of each rod holder. Staggering the holders on the boat will help keep rod tips from tangling as the rods load and unload during turns, in rough water or when fish bite, even if the fish are only giant sheepshead! They also increase your range for adjusting the rod tip angle so that the line stays off the water between the rod and the board. Raising rods higher above the gunwale also keeps rod butts out of the way of rear compartment lids in many boats.

CALM WATER

Rod holder adjustment isn't just important in rough water. It plays a major role in calm conditions too. Walleye and other game fish often move up near the surface when the lake goes flat. Unfortunately, they also become super spooky. During those conditions it is very important to space your OR12 boards out as far away from the boat as possible. Having rod tips high and properly spaced will allow for greater separation without increasing the possibility of tangles. Remember, the farther away the rod tips are from each other, the less likely the lines are to tangle.

LIVING PROOF

A few years ago while fishing on the Bay of Quinte on Lake Ontario, we were catching all of our walleye on the outside boards. Even though we were using an electric motor and fishing nearly 30 feet deep, the fish were still boat shy in the lake's gin clear waters. In order to get more bites, we had to spread all of our boards so that the



Presentation is the key to an awesome catch.

inside boards were at the same distance as the outside boards were formerly running.

In this case, standard rod holders weren't enough to keep the lines apart and off the surface. We swapped out for Riviera's Swiveling Rod Tower, which are vertical stacks of rod tubes, in order to run boards out nearly 200 feet from the boat. The elevated tubes on the tower easily allow for up to five boards to be run at max distances without the problems found with traditional rod holders. It's an extreme case, but it's also an example of the importance of having the proper equipment for the job at hand.

Friends in a nearby boat were not able to keep up because they were constantly dealing with tangles that occurred due to lack of spacing between rods. Often times, seemingly little things make a big difference, and in this case, not having the right rod holder organization cost them the opportunity for trophy walleye.

These and more tips can be found by visiting www.bigwaterfishing.com or www.Hightechfishing.com for more information.

TIPS ON HOOKING WALLEYE

BY KEN CLARK

KenClark@FishmasCharters.com

When fishing walleye with live bait remember that, "Time is your Friend". You can set the hook too soon, but not too late. I tell my customers that they will catch more fish with a rod in the rod holder than in their hand. It forces them to do the right thing; Wait!

I encourage my folks to keep the same pressure on the fish that got it hooked in the first place! Do NOT reel down, then bring the rod up, then reel back down! These are walleye, not salmon. Steady, steady pressure with "soft hands" gets the job done. The rod should have the same bend all the time. Walleye have extremely hard mouths. Your mission is to keep that hook wedged in the mouth.

Many fish will come off in the net. The mission is to NOT have them come off before they get to the net!

DOWNRIGGER RELEASE SAVVY – CONTINUED FROM PAGE 6

more line in contact with the release. The loop trick also allows the line to trip from the release smoothly even when heavy tension releases are used.

The loop trick can be used with any pinch pad style downrigger release, but is most commonly applied when fishing with medium and or heavy tension releases used for fishing rotators and other high drag attractor rigs.

SUMMING IT UP

Downriggers are deadly fishing tools, but even the most expensive downrigger is useless unless equipped with dependable line releases. Because downriggers are used to target a wealth of depths, different species and trolling speeds, no single release can function for all applications. The best approach is to match up your fishing situation perfectly to a line release designed for the job.

Thankfully Off Shore Tackle has a downrigger and stacker release for every trolling situation.

For the record – rubber bands are an office product, not a line release suitable for rigging downrigger lines.

FAMILY FISHING AT ITS FINEST WITH RIVIERA TROLLING SYSTEMS

BY DAVE ROBILLIARD

Have you ever been out fishing with the family for those elusive walleye or acrobatic rainbows and wondered why you weren't marking anything while you were trolling? Quite often it's not because there aren't any fish around, rather it's that they are far shallower than you might think and have actually swam to the side of your boat where the standard fish finders won't mark them. Never fear though, there are many very successful tactics and tools for picking up these skittish fish off to the sides of the boat. And that's where our story begins....

My wife Sara and I have been fishing out of Port Bruce located south of London Ontario on the north shore of Lake Erie for most of our lives. And over the years we have been slowly building up our tackle selection and tactics and have finally reached a point where we have had exceptional success out on the lake catching large walleye and monster rainbow trout; but it wasn't always that way.

I started fishing Lake Erie as a young boy with my grandfather. He used to take me down to the pier in Port Bruce every summer to fish for perch. Boy was that exciting! We'd get up at 5:00 am and drive down to the local bait shop where to this day I can still remember the fishy smells of the minnow tanks and the fresh smell of dew worms in moss. I was the wide eyed little boy who stared in amazement at the hundreds of emerald shiners swimming around in the shops minnow tanks and thinking we did pretty good already as we had a bucket



Sara Robilliard shows off just one of many fantastic catches as a result of using Riviera Trolling Systems products.

of "cool little fish" when we left the shop. We would get to the pier just as the early morning mist was rising over the lake. The red glow of the rising sun to the east would shoot rays of golden sunlight skipping across the water as it gradually burned away the mist and opened up a spectacular view of the lake. You could feel the excitement and anticipation of another day of fishing all around you as the local anglers were setting up their chairs and tackle jockeying for their favorite spots on the pier and then THEY would come.

Down the creek and around the bend you would hear the first of many to fire up their motors. I would stretch out over the side of the pier hoping to catch that first glimpse of them as they started to round the corner. Like every little boy I ever knew, few things were more exciting than watching those fishing boats with all the poles sticking up like porcupine quills off the back come down the creek and drive right past us in the morning to go chase "the big ones" as my grandfather would say with a knowing wink and a sparkle in his eyes. They would rumble past like a floating parade for a half hour or so and then all would be quiet as we sat there and focused on tips of our own rods hoping to battle the mighty yellow perch. Around lunch time the boats would begin to return and for every person on the pier it was a magical moment. You see back in the day the "lake fishermen" with the boats would come back to port and hold up their catch for everyone on the pier to see. And WOW, was that ever a treat to see! They would hold up monster fish! Great big silver fish and green fish the likes that I had never seen! Some of them were as big as I was! Those images of my early childhood fishing trips to Port Bruce pier will be forever etched in my memory. The smells of the lake in the early morning, the beauty of an early morning sunrise on a misty lake and the excited chatter of dozens of fisherman as the boats came back and showed off their catch. It was then I was truly hooked.

For years after that early morning trip to Port, I began to learn about trolling and big water techniques. I bought a little 12 foot aluminum boat with a 9.9 HP Mercury outboard on it when I was 16 years old. It was my first lake boat. Well for anyone who knows Lake Erie, that is a "fine weather boat" only. But it did allow me to get out and try trolling. I started out with a single lake fishing pole with a great big Penn reel on it. I would put a Rapala or Killer B3 deep diving lure on and start dragging it around behind me. And believe it or not, I actually caught fish! Luckily there were plenty of walleye

around so by chance I managed to drive through them on occasion and catch some very nice fish with nothing but a pole, simple boat and motor and big old Rapala. Over the years since then I have talked to many of the "lake fishermen", charter captains and pretty much anyone who loves fishing and learned quite a few tricks and techniques to catch walleye and rainbows out in the lake.

My wife Sara and I bought an 18 foot Doral with a 115 Mercury outboard on it about 4 years ago. It's an older boat, not the prettiest boat to look at, but together we have managed to catch quite a few fish in it. And we owe much of the credit to our planer boards. Every year we purchase a "big item" to add to our boat. We're not a wealthy couple and a big item for us is anything over \$300.00. The first year we added a downrigger and a couple of fishing poles, the next year purchased a Riviera Dual Planer Board Mast and Riviera Dual Planer Boards. Our third big purchase was a couple of fishing poles with lead core. Each of these investments improved our fishing success greatly. But together, used properly, they have accounted for some of the best catches of our lives!

For those of you who have never fished the central Lake Erie Basin out from Port Bruce, the challenge is that there is very, very little structure. Basically it is a gently sloping sand and gravel desert. You can drive 10 miles south of Port Bruce and still only be in 60 feet of water. There is very little bottom structure for fish to gather around so the majority of the fish are either sitting on bottom or suspended throughout the water column. It is these suspended schools of walleye which are our main focus for trolling with planer boards. Often you'll find the fish gathered between 15-35 feet down in anywhere from 45-65 feet of water during the late summer. A very successful technique for targeting these fish has been using lead core with spoons run off of planer boards. We use the Riviera Automatic Rewinding Reels and Mast and find it very angler friendly especially when putting the boards out and retrieving them. Unlike a hand winding system, the spring loaded reels actually allow you to clip the board on and toss it over the side and then the reel will let out as much line as you like. The first time you use it, you can set your preferred distance from the boat and then it will automatically let out that much line every time you use it after. By using a planer board mast and large boards, we can run multiple lines off each side of the boat using releases which slide down the planer board line towards the boards until they are out as far as we want them to be from the boat. The other bonus feature for using this mast on a smaller boat

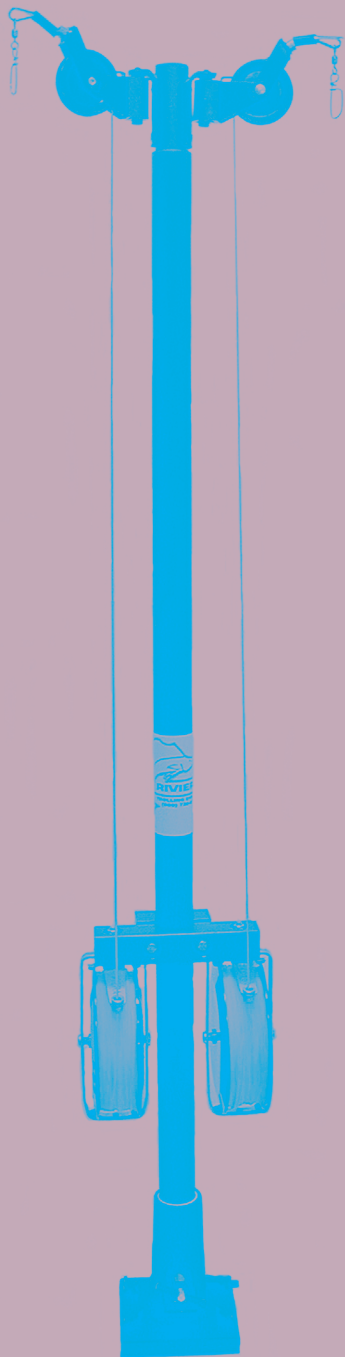


Above, Riviera offers both Dual Planer Boards (DPB) and Triple Planer Boards (TPB) that greatly compliment their Dual Planer Board Masts.

is that if you start drifting to one side or the other the spring loaded reels will actually take up the slack in your planer board line reducing your likelihood of tangling your lines behind the boat. And of course for anyone who has never tried planer boards before, spreading your lines out behind your boat is a HUGE bonus, not only for covering more area and pulling your line through the fish that may have skirted to the sides of your boat, but more importantly it keeps your lines spread out in such a manner that you very seldom cross lines and get tangled up when the lines are set properly.

One of our favorite techniques using the planer boards involve running lead core line which adds additional action too your spoons as well as allowing you to control your fishing depth simply by counting the number of colors you let out. A simple rule of thumb we have used is that your spoon will drop approximately 5 feet for every color you let out. So if you're running 4 colors out, your

CONTINUED ON PAGE 9



Riviera's Kachman Automatic Retrieval Reels With Collapsible Aluminum Mast (DPMKA) is well worth the investment that lasts a lifetime!

ABOUT THE EDITOR

Our intrepid editor, Mark Romanack continues to travel the globe in search of new fishing articles to write and TV episodes to film. Off Shore Tackle, the title sponsor for Fishing 411 TV, recognizes the value of developing new fishing products, teaching anglers how to get the most from these products and marketing those ideas to as many anglers as possible.

The upcoming Season 6 of Fishing 411 will broadcast to a national audience and viewers can look forward to 13 new episodes including some exceptional adventures. Just a few of the noteworthy episodes include a trip to the Central Basin of Lake Erie fishing Tadpoles with wall-eye pro Tommy Skarlis, a killer lake trout show filmed out of Harbor Beach, Michigan with Bruce and Nick DeShano using downriggers, dodgers and the Yakima Spin-n-Glow, trophy brook trout fishing on Lake Nipigon out of Pasha Lake Cabins in Ontario and a must see pike fishing adventure set on Makoop Lake in northwestern Ontario for trophy class pike.

Other topics of interest include Rainy Lake mixed bag, Lake Michigan kings, Lake Huron's mixed bag, St. Clair River smallmouth and much more.

For specific networks, dates and times, visit the www.fishing411.net site or follow our travels on Facebook.



FAMILY FISHING AT ITS FINEST WITH RIVIERA TROLLING SYSTEMS — CONTINUED FROM PAGE 8

spoon should be around the 15-20 foot range. If you're running a full 10 colors out your spoon should be dancing around the 45-50 foot range. There are a number of factors which can affect the actual depth your spoon runs at using lead core and there are charts available online and most tackle dealers who carry the lead core will likely have the charts as well or be familiar enough with it too explain using it in more detail. Some of the factors which can affect the actual depth of your spoon include speed, water currents, thermocline and of course the action of the spoon or lure you are using.

Another long time favorite technique we use for suspended walleye and rainbow off of the boards is using a 3 way swivel with a 3' line to a small 2 1/4" "silver" or "mixed veggies" RAC spoon and a 2' line down to a deep diving Rapala or Hotlips body bait. This allows the deep diving body bait to actually take your spoon down to the fish for you. The spoon acts like a mini flasher above the body bait and can simulate a feeding smaller fish. So don't be surprised when you hook a double header of walleye on the same line! We've actually hooked two large walleye on the same line at the same time on several occasions. If you think bringing in a 6-8 lb walleye is sporty, try doing it with a 9-10 lb walleye on the other lure at the same time! It makes for a very long and sporty battle to say the least. As for netting them at the boat, always start with the furthest fish first, you can trust me on this.

A third technique for fishing off of planer boards that we have used is to attach a mini dipsy diver or Jet planer

4-5 feet in front of the spoon. These will also allow you to control the depth at which you fish your spoons and will follow behind the boat off of the planer boards very nicely. Basically you are only limited by your imagination when it comes to fishing behind planer boards. The key factors are getting your bait out to the side of the boat and down to the right depth where the fish are feeding and at a speed that is optimal for both your bait presentation and the fish you are trying to catch.

By using the techniques described above, Sara and I have been able to take many "new anglers" out onto Lake Erie and hook them into some of the biggest fish they have ever caught. It's always a great pleasure for us to see a youngster's eyes light up into giant saucers as giant walleye or a silver torpedo of a rainbow come in behind the boat on their line. It's funny how a youngster will complain about how sore their arms are getting from reeling in a big fish; until they see the fish and then that's all they talk about for weeks after to anyone who will listen! And don't just think it was the little kids that do this, we've seen teenagers and adults do it too. Hopefully this season you, your family and your friends can get out and enjoy some amazing fishing and maybe even try some of these techniques yourself. We know they worked for us, and we have pictures of lots of great big smiles too prove it. Fishing with my grandfather was some of the best times I remember growing up. It was with him that I truly developed the "love for fishing" I would have the rest of my life.

So what are you waiting for? Go make some memories that will last a lifetime!

SNAPPERS HAVE THE ULTIMATE HOLDING POWER

BY GARY PARSONS
& KEITH KAVAJECZ

One of the best things about using Off Shore Tackle OR12 Side Planers is they can be rigged so many different ways to fit your way of fishing. After having used these boards for so many years and using various board and clip set-ups, our favorite has to be the OR12 rigged with OR12TF Tattle Flag kits and using an OR18 Snapper on the board's bracket/tow arm. This gives us the ultimate in line holding capability while also giving us the ability to detect bites on the boards with ease.

The OR18 Snapper is the only release that can be used effectively with super lines, monofilament, co-polymers and fluorocarbon lines.



OFF SHORE TACKLE

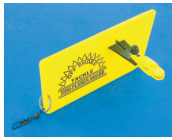
Your Leader In...

Side Planer Boards



Model # OR34
Mini Planer Board

Each OR34 Mini Planer includes an OR10 release, black bracket, split ring, snap swivel, nylon nut, 6/32 x 1/2" screw, and instructions. One board...Dual Purpose....It's Reversible and runs directly off of your rod line! Ideal for light tackle fishing.



Replacement Parts Are Available For The OR34.

Model # OR34B2
Bracket 2 Pack

Model # 34SCR BE
6/32 x 1/2" Screw

Model # SS BE
Snap Swivel



Model # OR12L
Side Planer Left

Model # OR12R
Side Planer Right



Each OR12 Side Planer includes a stationary flag, two OR19 releases, instructions and is carefully ballasted to run flawlessly in rough water off of your rod line. Ideal for Walleye and most fresh water fish.

Replacement Parts Available For The OR12 Side Planer

Model # OR12P2
Pigtail And Split Ring

Model # FLGSCR BE
Flag & 6/32 Screw

Model # SCR BE
6/32 Screw

Model # NN BE
Nylon Nut

Model # BRKT BE
Bracket With Two Pop Rivets

Model # RVT BE
Pop Rivet

Model # FOAM BE
Foam Insert

Model # TAB BE
Tab To Hold In Foam With Two 6/32 Screws

Model # BLSTSCR BE
Ballast Screw

Model # BLSTWGHT BE
Ballast Weight And 8 x 1/2 Screw

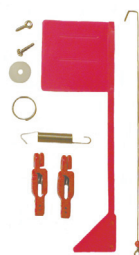


Tattle Flag Upgrade Kit



Model # OR12TF
Tattle Flag Upgrade Kit

Each kit includes flag, 2 OR16 clips, wire, spring, washer, screw eye, split ring, 6/32 screw and instructions. One kit will upgrade one OR12 Side Planer.



Replacement Parts Available For The OR12TF

Model # ORS2
Spring

Model # WIRE BE
Wire

Model # NW BE
Nylon Washer

Model # SCREYE BE
Screw Eye

Model # SPLTRNG BE
Split Ring

Planer Board Releases



Our three full size planer board releases come with a quick clip for use on dual planer boards. Also available without quick clips as shown on order blank. Their large diameter pinch pad design holds monofilament lines securely. Tension can be adjusted further by how deeply the line is placed into the pads.

Model # OR3 or OR3BWW
Light Tension Planer Board Release —White

This release is ideal for Walleye fishing in choppy water or Brown Trout using 10-25 pound test monofilament line.



Model # OR17BWW
Medium Tension Planer Board Release —Black

This release is ideal for Salmon, Steelhead, Trout and Muskie using 10-25 pound test monofilament line. It can also be used to pull lead core, Snap Weights and deep diving crankbaits.



Model # OR30BWW
Heavy Tension Planer Board Release —Red

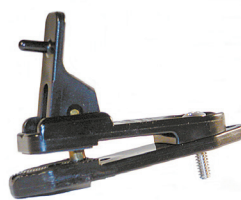


This release is ideal for Muskie, trophy Pike and salt water fish using over 20 pound test monofilament line.

Model # OR18
Snapper Adjustable Tension In Line Planer Board Release—Black

The OR18 is a full size release designed with an adjustable cam action locking arm that can be set to release at a range of tension settings or tightened down to hold even super braid lines and lead core securely.

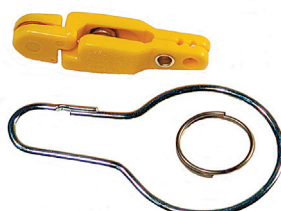
This release is made to attach to the bracket of our OR12 Side Planer. With the wide range of tension settings this release is ideal for Walleye, Striper, Salmon, Steelhead, Trout, and Muskie.



Our three half size adjustable tension planer board releases come with a quick clip for use on dual planer boards and split ring for use on in line planer boards. They are also available without a quick clip as shown on the order blank. Tension can be further adjusted by simply sliding the spring toward the pads to increase tension or away from the pads to decrease tension.

Model # OR10 or OR10BWW
Adjustable Light Tension Planer Board Release—Yellow

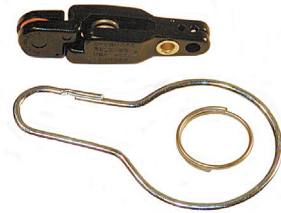
This release is ideal for light biting fish such as Walleye or smaller fish using 10-25 pound test monofilament line. Our three half size adjustable tension planer board releases come with a quick clip for use on dual planer boards and split ring for use on in line planer boards. They are also available without a quick clip as shown on the order blank. Tension can be further



adjusted by simply sliding the spring toward the pads to increase tension or away from the pads to decrease tension.

Model # OR14 or OR14BWW
Adjustable Medium Tension Planer Board Release—Black

This release is ideal for dual planer board trolling for Walleye and Salmon using 10-25 pound test monofilament line. This is the release most commonly used for rigging add-a-lines or fixed slider lines among downrigger anglers.



Model # OR19 or OR19BWW
Adjustable Heavy Tension Planer Board Release—Orange

This release comes as standard equipment on the OR12 Side Planer and is ideal for Striper, Salmon, Trout, and Muskie using 10-25 pound test monofilament and lead core.



Pro Weights



Model # OR20
Pro Weight System



Each system includes instructions, four OR16 Pro Snap Weight Clips, four split rings, two of each of the following guppy weights: 1/2 oz., 3/4 oz., 1 oz., 1 1/2 oz., 2 oz., and 3 oz. all contained in a plastic tackle box. Use as Snap Weights or In Line Weights - you decide. This system is used off of flat lines, dual planer boards and side planer boards.

Model # OR16 or OR16BWW
Pro Snap Weight Clip—Red



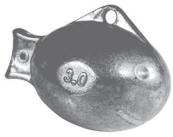
This half size clip has an extra heavy spring tension and includes a split ring. They are also available without a split ring as shown on the order blank. You simply position your fishing line behind the pin that protrudes through the center of the pads to hold your snap weight securely on the line. This item is ideal for use with snap weight fishing and super braid lines.

PRODUCT SHOWCASE

...Trolling Technology



Replacement Pro Guppy Weights



Model # OR20 1/2
1/2 Ounce Pro Guppy Weight

Model # OR20 3/4
3/4 Ounce Pro Guppy Weight

Model # OR20 1
1 Ounce Pro Guppy Weight

Model # OR20 1 1/2
1 1/2 Ounce Pro Guppy Weight

Model # OR20 2
2 Ounce Pro Guppy Weight

Model # OR20 3
3 Ounce Pro Guppy Weight

Resettable Diving Weights



Model # OR36 1
Tadpole Size 1

Model # OR36 2
Tadpole Size 2

Model # CS BE
Coast Lock Snap

Downrigger Releases



Our downrigger releases are all full size and therefore have the large diameter pinch pad design that holds monofilament lines securely. Tension can be adjusted further by how deeply the line is placed into the pads.

Model # OR4
Light Tension Single Downrigger Release, White



This release is ideal for Walleye, spring Coho, or other small to medium size fish using 10-25 pound test monofilament line.

Model # OR1
Medium Tension Single Downrigger Release, Black



This release is ideal for Salmon, Steelhead, Striper and Trout using 10-25 pound test monofilament line.

Model # OR8
Heavy Tension Single Downrigger Release, Red



This release is ideal for Muskie, Salmon, trophy Pike, and salt water fish using over 20 pound test monofilament line.

Model # OR7
Light Tension Stacker Downrigger Release, White



This release is ideal for Walleye, spring Coho, or other small to medium size fish using 10-25 pound test monofilament line and allows you to run two lines off of the same downrigger.

Model # OR2
Medium Tension Stacker Downrigger Release, Black



This release is ideal for Salmon, Steelhead, Striper and Trout using 10-25 pound test monofilament line and allows you to run two lines off of the same downrigger.

Replacement Pads



Model # ORRP8
Replacement pads for OR1, OR2, OR3, OR4, OR7, OR8, OR17, and OR30 releases.



Model # ORRP8SN
Replacement pads for OR18 releases.



Model # ORRP16
Replacement pads for OR10, OR14, OR19 releases along with OR16 clips WITHOUT the pin protruding through the center of the pads.



Model # ORRP16HL
Replacement pads for OR16 clips WITH pin that protrudes through the center of the pads.

Promotional Items



For promotional item updates, go to www.offshoretackle.com.



Model # CLR



Model # DCL



Model # HT



Model # LYND



Model # TWL



Model # PN



Model # FRSB



Model # OYTSHT



Model # OATSHRT



Model # OASWSHRT



Model # OYPOLO



Model # OBHSWSHRT (frontside)



Model # OBHSWSHRT (backside)



Model # PRO (frontside)



Model # PRO (backside)

LOOKING FOR SOMETHING

Maybe you missed some of our past editions of the "Off Shore Release", or are in need of more information on our products and their usage. All of this information is always available 24/7 on our website, www.offshoretackle.com!

MINI PLANER BOARDS ARE IDEAL FOR CRAPPIE

BY JESSE QUALE

The Off Shore Tackle Mini Planer Board (aka OR34) was designed with suspending panfish in mind. Both black and white crappie are widespread, abundant and notorious for suspending in the water column during certain times of year. Early in the spring prior to spawning and again after spawning these fish spend the majority of their time suspended and feeding on pelagic forage species like emerald shiners, gizzard shad and threadfin shad that thrive in open water environments.

Unfortunately for the traditionalist, panfish that suspend are difficult to target with mainstream fishing tactics like jigging, float fishing or casting spinner rigs. That's exactly why a growing number of anglers are going after these fish using crankbaits and a modified version of the trolling tactics popularized by walleye anglers!

Trolling with small to medium sized crankbaits is not only one of the best ways to search for open water crappie, these fish are amazingly aggressive and willing to bite a wide variety of lure brands and styles.

GEARING UP FOR MINI BOARD TROLLING

The rods and reels normally used for trolling chores are a little on the heavy side for crappie fishing. A perfect crappie trolling outfit consists of a light or medium/light action baitcasting/trolling style rod about seven to seven and a half feet in length. Match this rod up with one of the smaller size 15 or 17 line counter reels loaded with eight to 10 pound test monofilament line.

A set up of four to six "light weight" trolling rods is ideal for targeting crappie and other abundant panfish species like white bass. This rod/reel/line set up is also well suited to incorporating the OR34 Mini Planer Board. Using Mini Planer Boards, it enables trolling lines to be spread out, covering more water in the process. By simply adjusting the lead lengths used while trolling crankbaits, it's a simple process to "flood" the water column with lures.

STANDARD RIGGING

The OR34 can be rigged a number of ways making it a versatile trolling tool. The board comes factory supplied with an OR10 (yellow) light tension line release that gets mounted on the tow arm with supplied hardware and a snap swivel that mounts to the back of the board via a supplied split ring.

This standard rigging method requires letting out the desired amount of trolling lead and then placing the line between the rubber pads on the OR10 line release mounted on the tow arm of the board. Complete the rigging by clipping the snap swivel mounted at the rear of the board over the line. At this point the board is dropped in the water and line played out until the board is the desired distance away from the boat.

Rigged in this way the line can be tripped from the release when a fish is hooked, allowing the board to slide down the line. To prevent the board from hitting the hooked fish, add a bead or swivel about two or three feet in front of the lure.

SNAP WEIGHT CLIP RIGGING

Another handy rigging method for the OR34 is to mount the OR10 release to the tow arm and then mount an OR16 Pro Snap Weight Clip (red) to the split ring on the back of the board. After setting the lure the desired distance behind the boat, place the line between the rubber pads of both the OR10 release on the tow arm and the OR16 clip on the split ring. The OR16 has a pin in the center of the rubber pads. Be sure to place the line behind the pin.

Rigged in this manner, the board can be tripped by popping the line free of the OR10 release, leaving the board attached to the line via the OR16 Snap Weight Clip. When a fish is being fought, the board will stay on the line and eventually will need to be removed as it nears the rod tip.



Trolling with small to medium sized crankbaits is not only one of the best ways to search for open water crappie, these fish are amazingly aggressive and willing to bite a wide variety of lure brands and styles.

THE OR34 IS REVERSIBLE

The OR34 is also reversible and can be rigged to fish either the port or starboard side of the boat. It takes only a couple seconds to snap the tow arm into the appropriate position to fish on either side of the boat.

MORE CRAPPIE TROLLING TIPS

At the terminal end a wealth of small to medium sized diving crankbaits represent the best lure options for crappie trolling with the OR34. Just a few of the popular crappie sized crankbaits include the Storm 1/4 ounce Hot n Tot, Berkley Flicker Shad No. 5., No. 5 Rapala Shad Rap, the 200 series Rip Shad from Reef Runner, the Worden's Fatfish and the 200 series Bandit crankbaits. Crankbaits that float at rest and dive when trolled are the best option as these lures can be easily fished at varying depths by manipulating the lead lengths used while trolling.

A slow to moderate trolling speed seems to produce best on crappie. When a fish is hooked, mark the location using a GPS unit or by tossing a marker buoy over the side of the boat. Circle around and make more passes through the same area because a typical school of crappie may represent hundreds of fish.

Crappie are often found suspended over the top of cover including submerged trees, weed patches, rocks or along the deep water side of fast sloping breaks. In the fall look for crappie suspending over deep water, especially in bottle neck areas.

SUMMING IT UP

Crappie and other panfish spend an amazing amount of time suspended in the water column. Catching these fish requires a trolling approach and the OR34 Mini Planer Board is a great tool for targeting these fish.

Be prepared when you hit the water – purchase your Off Shore Tackle Company LLC products at your local dealer or send in your order today!

Prices in effect January 1, 2013 through December 31, 2013



Order Blank

MODEL NUMBER	DESCRIPTION	UNIT PACKAGE	NUMBER OF PKGS. ORDERING	PRICE	EXTENDED AMOUNT
OFF SHORE TACKLE COMPANY LLC SIDE PLANER BOARD PRODUCTS					
OR34	Mini Planer Board; One Board...Dual Purpose...I'm Reversible	Pkg. of 1		\$17.15	
OR34B2	Replacement Bracket For OR34	Pkg. of 2		\$2.90	
34SCR BE	Replacement 6/32 x 1/2 Screw For OR34	Pkg. of 1		\$0.20	
SS BE	Replacement Snap Swivel For OR34	Pkg. of 1		\$0.65	
OR12L	Side Planer Left	Pkg. of 1		\$39.25	
OR12R	Side Planer Right	Pkg. of 1		\$39.25	
OR12P2	Pigtail and Split Ring For OR12L and OR12R	Pkg. of 2		\$3.85	
FLGSCR BE	Flag and 6/32 Screw	Pkg. of 1		\$3.35	
SCR BE	6/32 Screw For OR12L, OR12R, and OR12TF	Pkg. of 1		\$0.20	
NN BE	Nylon Nut	Pkg. of 1		\$0.40	
BRKT BE	Bracket With Two Pop Rivets For OR12L and OR12R	Pkg. of 1		\$2.95	
RVT BE	Pop Rivet	Pkg. of 1		\$0.40	
FOAM BE	Foam Insert For OR12L and OR12R	Pkg. of 1		\$0.85	
TAB BE	Tab To Hold Foam Insert In and Two 6/32 Screws For OR12L and OR12R	Pkg. of 1		\$0.85	
BLSTSCR BE	Ballast Weight Screw	Pkg. of 1		\$0.20	
BLSTWGHT BE	Ballast Weight and 8 x 1/2 Screw	Pkg. of 1		\$1.90	
OR12TF	Tattle Flag Upgrade Kit	Pkg. of 1		\$27.10	
ORS2	Tattle Flag Replacement Spring	Pkg. of 2		\$7.75	
WIRE BE	Tattle Flag Replacement Wire	Pkg. of 1		\$2.10	
NW BE	Tattle Flag Replacement Nylon Washer	Pkg. of 1		\$0.40	
SCREYE BE	Tattle Flag Replacement Screw Eye	Pkg. of 1		\$0.20	
SPLTRNG BE	Tattle Flag Replacement Split Ring	Pkg. of 1		\$0.15	
OFF SHORE TACKLE COMPANY LLC PLANER BOARD AND SIDE PLANER BOARD RELEASES					
QC BE	Quick Clip	Pkg. of 1		\$0.20	
OR3	Light Tension, White With Quick Clip	Pkg. of 2		\$16.00	
OR3BWW	Light Tension, White With Quick Clip	Pkg. of 50		\$380.60	
OR3BWOW	Light Tension, White Without Quick Clip	Pkg. of 50		\$378.10	
OR17BWW	Medium Tension, Black With Quick Clip	Pkg. of 24		\$182.50	
OR17BWOW	Medium Tension, Black Without Quick Clip	Pkg. of 24		\$181.30	
OR30BWW	Heavy Tension, Red With Quick Clip	Pkg. of 6		\$54.85	
OR30BWOW	Heavy Tension, Red Without Quick Clip	Pkg. of 6		\$54.55	
OR18	Snapper Adjustable Tension, Black	Pkg. of 1		\$15.60	
OR10	Adjustable Light Tension, Yellow With Split Ring and Quick Clip	Pkg. of 4		\$22.50	
OR10BWW	Adjustable Light Tension, Yellow With Split Ring and Quick Clip	Pkg. of 100		\$545.80	
OR10BWOW	Adjustable Light Tension, Yellow Without Split Ring and Quick Clip	Pkg. of 100		\$537.80	
OR14	Adjustable Medium Tension, Black With Split Ring and Quick Clip	Pkg. of 4		\$22.50	
OR14BWW	Adjustable Medium Tension, Black With Split Ring and Quick Clip	Pkg. of 100		\$545.80	
OR14BWOW	Adjustable Medium Tension, Black Without Split Ring and Quick Clip	Pkg. of 100		\$537.80	
OR19	Adjustable Heavy Tension, Orange With Split Ring and Quick Clip	Pkg. of 2		\$11.60	
OR19BWW	Adjustable Heavy Tension, Orange With Split Ring and Quick Clip	Pkg. of 100		\$545.80	
OR19BWOW	Adjustable Heavy Tension, Orange Without Split Ring and Quick Clip	Pkg. of 100		\$537.80	
OFF SHORE TACKLE COMPANY LLC PRO SNAP WEIGHT PRODUCTS					
OR20	Pro Snap Weight System	Pkg. of 1		\$47.70	
OR16	Extra Heavy Pro Snap Weight Clip, Red With Split Ring	Pkg. of 2		\$13.45	
OR16BWW	Extra Heavy Pro Snap Weight Clip, Red With Split Ring	Pkg. of 100		\$596.00	
OR16BWOW	Extra Heavy Pro Snap Weight Clip, Red Without Split Ring	Pkg. of 100		\$593.00	
OR20 1/2	1/2 Ounce Replacement Pro Guppy Weight	Pkg. of 3		\$4.10	
OR20 3/4	3/4 Ounce Replacement Pro Guppy Weight	Pkg. of 3		\$4.50	
OR20 1	1 Ounce Replacement Pro Guppy Weight	Pkg. of 3		\$5.00	
OR20 1 1/2	1 1/2 Ounce Replacement Pro Guppy Weight	Pkg. of 2		\$4.70	
OR20 2	2 Ounce Replacement Pro Guppy Weight	Pkg. of 2		\$5.20	
OR20 3	3 Ounce Replacement Pro Guppy Weight	Pkg. of 1		\$3.90	
OFF SHORE TACKLE COMPANY LLC RESETTABLE DIVING WEIGHTS					
OR36 1	Tadpole Size 1	Pkg. of 1		\$7.30	
OR36 2	Tadpole Size 2	Pkg. of 1		\$7.55	
CS BE	Coast Lock Snap	Pkg. of 1		\$0.40	
OFF SHORE TACKLE COMPANY LLC SINGLE DOWNRIGGER RELEASES					
OR4	Light Tension, White	Pkg. of 1		\$9.95	
OR1	Medium Tension, Black	Pkg. of 1		\$9.95	
OR8	Heavy Tension, Red	Pkg. of 1		\$14.00	
OFF SHORE TACKLE COMPANY LLC STACKER DOWNRIGGER RELEASES					
OR7	Light Tension, White	Pkg. of 1		\$16.20	
OR2	Medium Tension, Black	Pkg. of 1		\$16.20	

Be prepared when you hit the water - purchase your Off Shore Tackle Company LLC products at your local dealer or send in your order today!

Prices in effect January 1, 2013 through December 31, 2013



ORDER BLANK CONTINUED FROM PRIOR PAGE

Table with columns: MODEL NUMBER, DESCRIPTION, UNIT PACKAGE, NUMBER OF PKGS. ORDERING, PRICE, EXTENDED AMOUNT. Includes sections for REPLACEMENT PADS and PROMOTIONAL ITEMS.

Prices and packaging subject to change without notice.

Product Total _____

Table with columns: *SHIPPING CHARGES, MERCHANDISE TOTAL, SHIPPING CHARGE. Lists rates for 48 MAINLAND UNITED STATES.



*Shipping Charges _____
Subtotal _____
(Product Total Plus Shipping Charges) _____
Michigan Residents and Orders Being Shipped to a Michigan Address from Non Residents, Add 6% Sales Tax Based On Subtotal
Total (Subtotal Plus Sales Tax) U. S. Funds Enclosed

*For orders being shipped outside of the 48 mainland United States, please call for shipping charges. Duties and taxes will be your responsibility. Send THIS completed order form, along with your U.S.P.S. money order, check, (sorry, no out of country money orders or checks can be accepted), or COMPLETE credit card information to:

Off Shore Tackle Company LLC, P.O. Box 88, Port Austin, MI 48467-0088.

Orders will be released upon clearance of checks, please allow 2-3 weeks for delivery. Credit card orders are normally shipped within 5 business days of receipt of order.

MAILING ADDRESS (Check here _____ if this is an address change):
Name: _____
c/o: _____
Address: _____
City: _____ State: _____ ZIP: _____
Telephone: (_____) _____ - _____
E-Mail Address: _____

SHIP ORDER TO (Must have street address for UPS/FedEx delivery):
Name: _____
c/o: _____
Address: _____
City: _____ State: _____ ZIP: _____
Telephone: (_____) _____ - _____
Please check:
___ Residence
___ Work
___ Other

Please check: Your mailing address MUST match the address that your credit card bill is mailed to - no exceptions.
To charge your order on your MasterCard or Visa, enter your credit card number, expiration date, card ID number and sign below, or call 989-738-5600.
___ MasterCard Number _____ Exp. Date: _____ ID Number: _____
___ Visa Signature _____ (ID Number is located on the backside of your MasterCard or Visa after your credit card number [3 Digit Code]).

Riviera Product Showcase



Dual Planer Board Masts

Kachman Automatic Retrieval Reels With Collapsible Aluminum Mast, Base, Deck Plate and Four Hold Down Knobs (Shown right)

Unit Includes:

- Aluminum Pulley Brackets
- 7' Collapsible Aluminum Black Powder Coated Mast
- Nylon Mounting Bracket
- Kachman Automatic Retrieval Reels
- 150' Fluorescent Orange 200# Planer Line On Each Reel Multidirectional Pulleys
- Stainless Steel Guid Bushings
- Two OR10 Adjustable Light Tension Planer Board Releases

This Unit Is Available in Different Base Options

Model # DPMKA Has The Regular Base

Model # DPMKSA Has the Springfield Taper-Lock Seat Mount

Model # DPMKSLA Has The Springfield Spring-Lock Seat Mount

Model # DPMKSUA Has The Springfield Uni-Lock Seat Mount

Model # DPMKSZA Has The Attwood Swivl-Eze 2 3/8" Seat Mount

Aluminum Manual Retrieval Posi-Stop Reels, Collapsible Mast, Base, Deck Plate and Four Hold Down Knobs (Shown right)

Unit Includes:

- Aluminum Pulley brackets
- 7' Collapsible Aluminum Black Powder Coated Mast
- Nylon Mounting Bracket
- Aluminum Manual Posi-Stop Retrieval Reels
- 150' Fluorescent Orange 200# Planer Line On Each Reel
- Multidirectional Pulleys
- Stainless Steel Guide Bushings
- Two OR10 Adjustable Light Tension Planer Board Releases

This Unit Is Available in Different Base Options

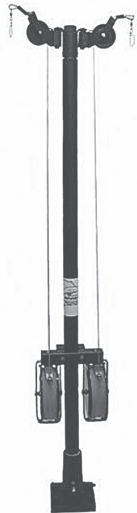
Model # DPMPA Has The Regular Base

Model # DPMPSA Has The Springfield Taper-Lock Seat Mount

Model # DPMPSLA Has The Springfield Spring-Lock Seat Mount

Model # DPMP SUA Has The Springfield Uni-Lock Seat Mount

Model # DPMP SZA Has The Attwood Swivl-Eze 2 3/8" Seat Mount



Base Options



Regular Base



Springfield Taper-Lock Seat Mount



Springfield Spring-Lock Seat Mount

Springfield Uni-Lock Seat Mount



Attwood Swivl-Eze 2 3/8" Seat Mount

Swiveling Rod Tower

This unit incorporates our swiveling base that allows the tower to swivel and lock up every 90 degrees with easy removal of the tower by simply pulling out a spring loaded pin and lifting. Unit is made of black powder coated aluminum for durability with all rod holders being adjustable in 15 degree increments. Tower can be used on both port and starboard sides!

Model # SRT3 Has 3 Adjustable Rod Holders

Model # SRT4 Has 4 Adjustable Rod Holders

Model # SRT5 (Shown) Has 5 Adjustable Rod Holders Other models are in the works to accommodate 6 and 7 rod holders along with an adapter to slide easily into your existing track for all models!

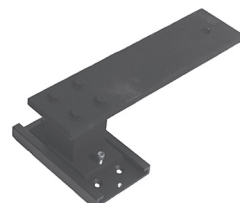
Model # SRTRH Extra rod holder with indexing bracket



Track Mount For RCPK And RCWIRE

Model # TM Track Mount

This 6" track permanently mounts to your, gunwale, hard top, fly bridge or radar arch of your boat. The RCPK or RCWIRE is mounted to the track's adapter and is easily put into use or removed.



Planer Board Rail Clamp Mounts

Model # RCPK Kachman Automatic Retrieval Reels With Rail Clamp Mount

Unit Includes:

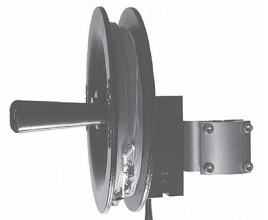
- Kachman Automatic Retrieval Reels
- 150' Fluorescent Orange 200# Planer Line
- Aluminum Clamp Bracket That Fits 3/4" to 1 1/4" Rails



Model # RCPP Aluminum Manual Retrieval Posi-Stop Reels

Unit Includes:

- Aluminum Manual Retrieval Posi-Stop Reels
- 150' Fluorescent Orange 200# Planer Line
- Aluminum Clamp Bracket That Fits 7/8" to 1" Rails



Dual and Triple Planer Boards

Model # DPB Dual Planer Board—Collapsible For Easy Storage



Model # TPB Triple Planer Board—Collapsible For Easy Storage



The DPB's and TPB's are used in conjunction with a mast system. They are ballasted so the nose is slightly raised to cut through the waves easier and have a 3 position tow point to allow you to adapt to different water conditions instantly. To store, simply fold the outside board forward. Each board can be used on either port or starboard. A sample OR10 Adjustable Light Tension Planer Board Release comes with each DPB; a sample OR30 Heavy Tension Planer Board Release comes with each TPB.

Hand /Wire Line Reels



Model # RCWIRE Kachman Automatic Retrieval Hand Line Reel Kit

Unit Includes:

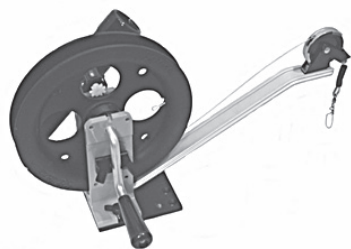
- Kachman Automatic Retrieval Reel
- 200' Coated 60# Wire With Snap Swivel Termination
- 5' Pro Shank
- Aluminum Clamp Bracket That Fits 3/4"-1 1/4" Rails
- Tempress Rod Holder Adapter Replacement Parts Available

Model # WGHT 1 1/4 Pound Weight

Model # SHNK 5' Pro Shank

Riviera Product Showcase

Manual Downriggers



Model # 300-15

Unit Includes:

- 15" Flat Arm
- 200' Of 150# Stainless Steel Wire
- Retermination Snap Swivel Assembly
- Deck Mounting Plate
- Two Hold Down Knobs
- Gear Driven Depth Meter
- Safety Clutch
- Rod Holder
- Off Shore Downrigger Release

Model # 500

Unit Includes:

- 200' Of 150# Stainless Steel Wire
- Retermination Snap Swivel Assembly
- Deck Mounting Plate
- Two Hold Down Knobs
- Gear Driven Depth Meter
- Safety Clutch
- Rod Holder
- Off Shore Downrigger Release

This Unit Is Available in Three Different Arm Lengths

Model # 500-18

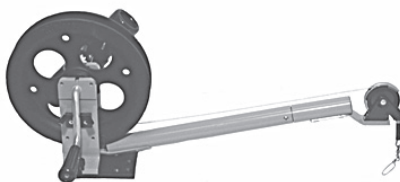
Comes With An 18" Arm (Shown above)

Model # 500-30

Comes With A 30" Arm

Model # 500-48

Comes With A 48" Arm



Model # 700

Unit Includes:

- 200' Of 150# Stainless Steel Wire
- Retermination Snap Swivel Assembly
- Deck Mounting Plate
- Swivel Base
- Four Hold Down Knobs
- Gear Driven Depth Meter
- Safety Clutch
- Dual Rod Holders
- Off Shore Downrigger Release

This Unit Is Available in Three Different Arm Lengths

Model # 700-24

Comes With A 24" Arm (Shown above)

Model # 700-48

Comes With A 48" Arm

Model # 700-72

Comes With A 72" Arm

For more information

call (989) 738-5700.

www.rivieratrolling.com

LETTER FROM THE CHAIRMAN OF THE BOARDS, BRUCE DESHANO

WOW! This is the 20th year of the Off Shore Release! Hard to imagine it has been that long. Mark Romanack is the original Editor and still is. He is one of the top writers in the country and now has his own TV program as well with "Fishing 411". Thanks Mark, a lot of readers are better anglers because of the information you have shared here, in your books and now in your TV program.

In reviewing 2012, the weather was finally good that spring and a lot of us got our boats in the water early for both walleye and cold water fish. Shallow water walleye are perfect for Off Shore Tackle Side Planers, especially the OR34 Mini Planer. Dad and I fished shallow weeds almost all year and used the Mini Planer with a ½ oz Guppy weight exclusively. We almost forgot how to fish the OR12 and tattle flags!

Nick and I had fun doing promotional events with the outdoor writers and our Pro Staff, especially with Tommy Skarlis at Lake Erie last spring. The weather was good for us, not like in '11. We caught a lot of fish on the Tadpole and Guppy weights pulling harnesses and small spoons. Mark Romanack did a bunch of filming and also got a 3 treble harness in the head while posing for photos. I bet Mark won't print that one! A good example of why you should always wear eye protection while fishing.

I had the pleasure of hosting Babe Winkleman for 3 days of filming here on Saginaw Bay over Father's Day weekend. It started out slow and I am sure he was wondering what kind of angler Eric Olsen had set him up with. Then we got it going and had a field day with a lot of multiple hook-ups and nice fish. I hope I get to fish with him



Vice Chairman of the Boards, Nick DeShano; Lou DeShano; and Chairman of the Boards, Bruce DeShano enjoy spending family time together on the water for all kinds of species.

again someday.

History was made in the angling world this year with Marianne Huskey winning the AIM Angler of the Year honors. She became the first female ever to win a major AOY title! Congratulations to Marianne! She is also a very active person with the kids fishing events at the AIM tournaments.

In this issue, we have articles on walleye, salmon, crappie and many other specie of fish using Off Shore and Riviera products. We have learned new uses for the Tadpole with lead core and copper line to get even deeper. Salmon and trout can now be reached on planer boards up to 100 feet down with these techniques.

It also was a great year with family; dad, Nick, and I managed to get some good fishing time out of Harbor Beach for dad's 85th birthday. We also caught quite a few walleye in Saginaw Bay this year. My grandson Ari turned two and it is amazing to watch him grow up. Jenna's daughter and son-in-law (Kasey and Paul) had a son Alex on May 30 so we have another little guy to watch grow up!

Social media is getting very popular and an excellent way to share a great hunt, fishing trip and suggestions and ideas for new products. Videos, pictures and comments are always welcome. Please LIKE us on our Facebook site and keep up on the latest from Off Shore Tackle users. Thank you for your support and we here at Off Shore Tackle are committed to bringing the angler the best product available. We are the "Leader in Trolling Technology". Still made in America!

Be prepared when you hit the water - purchase your Riviera Trolling Systems products at your local dealer or send in your order today!

Prices in effect January 1, 2013 through December 31, 2013



Order Blank

MODEL NUMBER	DESCRIPTION	UNIT PACKAGE	NUMBER OF PKGS. ORDERING	PRICE	EXTENDED AMOUNT
RIVIERA DUAL PLANER BOARD MASTS					
DPMKA	7' Collapsible Aluminum Black Powder Coated Mast With Kachman Automatic Retrieval Reels With Regular Base	Pkg. of 1		\$395.00	
DPMKSA	Fits With Springfield Taper-Lock Seat Mount	Pkg. of 1		\$395.00	
DPMKSLA	Fits With Springfield Spring-Lock Seat Mount	Pkg. of 1		\$395.00	
DPMKSUA	Fits With Springfield Uni-Lock Seat Mount	Pkg. of 1		\$395.00	
DPMKSZA	Fits With Attwood Swivl-Eze 2-3/8" Seat Mount	Pkg. of 1		\$395.00	
DPMPA	7' Collapsible Aluminum Black Powder Coated Mast With Manual Posi-Stop Reels With Regular Base	Pkg. of 1		\$285.00	
DPMPSA	Fits With Springfield Taper-Lock Seat Mount	Pkg. of 1		\$285.00	
DPMPSLA	Fits With Springfield Spring-Lock Seat Mount	Pkg. of 1		\$285.00	
DPMP SUA	Fits With Springfield Uni-Lock Seat Mount	Pkg. of 1		\$285.00	
DPMP SZA	Fits With Attwood Swivl-Eze 2-3/8" Seat Mount	Pkg. of 1		\$285.00	
RIVIERA SWIVELING ROD TOWER					
SRT3	With 3 Adjustable Rod Holders	Pkg. of 1		\$149.00	
SRT4	With 4 Adjustable Rod Holders	Pkg. of 1		\$199.00	
SRT5	With 5 Adjustable Rod Holders	Pkg. of 1		\$249.00	
SRTRH	Extra Adjustable Rod Holder With Index Brackets	Pkg. of 1		\$49.00	
RIVIERA TRACK MOUNT					
TM	Track Mount For RCPK or RCWIRE	Pkg. of 1		\$49.00	
RIVIERA PLANER BOARD RAIL CLAMP MOUNTS					
RCPK	Kachman Automatic Retrieval Rail Clamp	Pkg. of 1		\$159.00	
RCPP	Manual Retrieval Rail Clamp With Aluminum Black Powder Coated Posi-Stop Reels	Pkg. of 1		\$89.00	
RIVIERA DUAL AND TRIPLE PLANER BOARDS					
DPB	Dual Planer Board - Collapsible For Easy Storage	Pkg. of 1		\$72.00	
TPB	Triple Planer Board - Collapsible For Easy Storage	Pkg. of 1		\$95.00	
RIVIERA HAND LINE REELS					
RCWIRE	Kachman Automatic Hand Line Reel With Rail Clamp Mount, Wire, Weight, Shank, and Rod Holder Adapter	Pkg. of 1		\$189.00	
WGHT	1 1/4 Pound Weight	Pkg. of 1		\$5.00	
SHNK	5' Pro Shank	Pkg. of 1		\$4.00	
RIVIERA MANUAL RETRIEVAL DOWNRIGGERS					
300-15	Model 300 With 15" Arm	Pkg. of 1		\$175.00	
500-18	Model 500 With 18" Arm	Pkg. of 1		\$190.00	
500-30	Model 500 With 30" Arm	Pkg. of 1		\$200.00	
500-48	Model 500 With 48" Arm	Pkg. of 1		\$210.00	
700-24	Model 700 With 24" Arm ANGLERS PAC	Pkg. of 1		\$285.00	
700-48	Model 700 With 48" Arm ANGLERS PAC	Pkg. of 1		\$290.00	
700-72	Model 700 With 72" Arm ANGLERS PAC	Pkg. of 1		\$295.00	

*SHIPPING CHARGES WITHIN THE 48 MAINLAND UNITED STATES:	MERCHANDISE TOTAL	SHIPPING CHARGE
	\$0.01 - \$15.00	\$8.00
	\$15.01 - \$30.00	\$9.00
	\$30.01 - \$50.00	\$10.00
	\$50.01 - \$80.00	\$11.00
	\$80.01 - \$100.00	\$12.00
	\$100.01 - \$200.00	\$13.00
	\$200.01 - \$300.00	\$14.00
	\$300.01 - \$400.00	\$15.00
	\$400.01 - \$500.00	\$16.00
	Over \$500.00	FREE

Product Total _____
 *Shipping Charges _____
 Subtotal (Product Total Plus Shipping Charges) _____
Michigan Residents and Orders Being Shipped to a Michigan Address from Non Residents, Add 6% Sales Tax Based On Subtotal _____
 Total (Subtotal Plus Sales Tax) U. S. Funds Enclosed

*For orders being shipped outside of the 48 mainland United States, please call for shipping charges. Duties and taxes will be your responsibility. Send THIS completed order form, along with your U.S.P.S. money order, check, (sorry, no out of country money orders or checks can be accepted), or COMPLETE credit card information to:

Riviera Trolling Systems Incorporated, P.O. Box 507, Port Austin, MI 48467-0507.

Orders will be released upon clearance of checks, please allow 2-3 weeks for delivery. Credit card orders are normally shipped within 5 business days of receipt of order.

MAILING ADDRESS (Check here _____ if this is an address change): SHIP ORDER TO (Must have street address for UPS/FedEx delivery): Please check:
 Residence
 Work
 Other

Name: _____ Name: _____
 c/o: _____ c/o: _____
 Address: _____ Address: _____
 City: _____ State: _____ ZIP: _____ City: _____ State: _____ ZIP: _____
 Telephone: (_____) _____ - _____ Telephone: (_____) _____ - _____
 E-Mail Address: _____

Please check: **Your mailing address MUST match the address that your credit card bill is mailed to - no exceptions.**

American Express To charge your order on your American Express, Discover, MasterCard or Visa, enter your credit card number, expiration date, card ID number and sign below, or call 989-738-5700.

Discover
 MasterCard **Number** _____ **Exp. Date:** _____ **ID Number:** _____
 Visa **Signature** _____

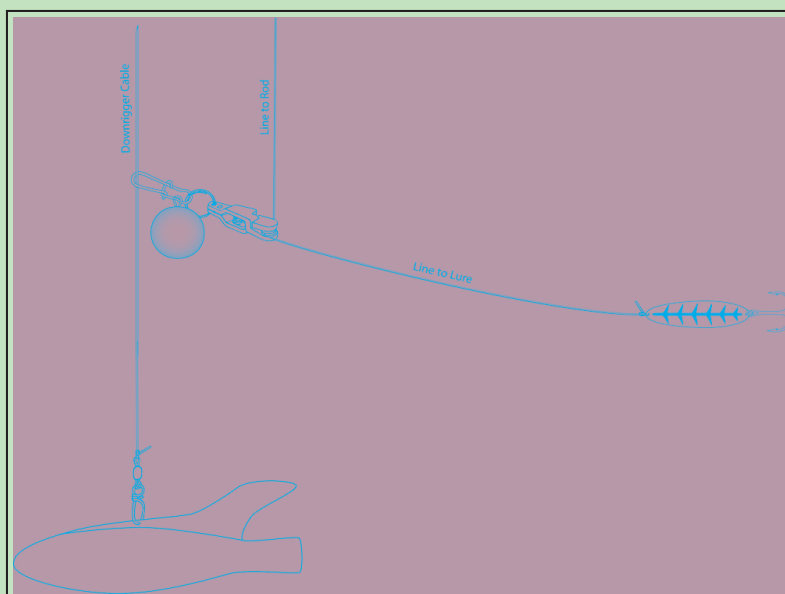
(ID Number is located on the backside of your Discover, MasterCard or Visa after your credit card number [3 Digit Code]; on American Express it is located on the front of your card usually to the upper right of your card number [4 Digit Code]).

FLUTTERING SIMPLIFIED

BY CAPTAIN DONALD RUPPERT
WaveTamer Sportfishing

There is a subject out there with many misconceptions; it is most often known as fluttering within the trolling circles, mainly for walleye anglers on the Great Lakes. The principle of fluttering is using a conventional downrigger setup in conjunction with your graph or sonar. When fish are shown on the graph or sonar, you raise the lure presentation (fluttering) through the marks in the water column. The problem is the lure presentation goes limp once released and stops performing or working as an effective bait presentation. Once the slack is taken up from the boat trolling forward, the lure presentation accelerates speed and climbs to the surface at a rate typically too fast to effectively target a bite. This lure presentation has merit because it is the goal to present the lure in the strike zone of the fish being located on the sonar.

What we developed is a way to deliver the lure presentation by connecting an Off Shore Tackle OR19 Adjustable Heavy Tension Planer Board Release to an 8 oz. ball weight by way of a large snap (very similar to that of the planer board and pro snap weight concept) onto your downrigger cable so we can effectively control the proper action of the lure and allow the lure to slide on the downrigger cable.



Here's how it works. Deploy your downrigger cannonball to set near the bottom. Now, set your lure back the desired length, we typically use 20'-50' leads. Attach the OR19 (that you already attached to the ball weight and snap) onto your rod line. Then attach the snap to the downrigger line and set your rod's line counter to zero (with the lure at the surface) and then allow the lure to descend to the targeted depths where the fish are located. As you are trolling, you may mark fish higher in the water column. Now, because you have the sliding capability on the rigger, you can simply wind up the reel to the new targeted level where the fish are, all without moving the downrigger cannonball height. With the lure secured to the OR19, you maintain proper speed (action) of the lure with the boat moving forward. Thus maintaining proper presentation all while the lure is traveling through the fish's strike zone. Complete control with Off Shore products. This cannot be achieved by simply popping the rigger release and floating or guessing that the lure will pass

by the fish found on the sonar unit.

This approach has delivered many, many large walleye; certainly contributing to our catch rates and tournament finishes. We are extremely proud to be affiliated with Off Shore Tackle products!

CHOOSING PLANER BOARDS

BY MARK ROMANACK

Not many anglers would deny that planer boards are among the most deadly of all the trolling methods. Despite the fact most every agrees that planer boards catch more and bigger fish, not everyone agrees on which type of planer board is the best.

Planer board preferences have a lot to do with the type of boat they are used on, the water most often fished and of course the species being targeted. No one type of planer board adapts perfectly to all fishing situations which means the serious planer board angler is likely to own and use two or more popular options.

Anglers have at their disposal three distinctively different types of planer board systems to choose from. Topping that list is the "mast system" by Riviera Trolling Systems that incorporates a large dual or triple board tethered to the boat using a stout line spooled onto a reel system that is then mounted to a mast secured to the front of the boat. Sometimes these boards are outfitted to larger hard top style boats simply using reels mounted on appropriately located rails.

Secondly, there are in line boards that are designed to attach directly to the fishing line. The famous OR12 Side Planer stands tall in this department.

Lastly, the newest generation of planer boards, is the OR34 Mini Planer Board variation of in line boards that function much the same as in line boards but are most commonly used for fishing smaller waters, lighter lines and lighter lures.

ABOUT MAST SYSTEMS

A Riviera mast planer board system set up can be fished on any boat type, but these boards are most often found in service on larger boats capable of handling five or six anglers. The clear advantage of a mast system is the ability to fish four, five or even six lines per side of the boat.

Mast systems also have the edge when fishing big and rough water environments. Because dual and triple boards have the ability to plow through rough water, they are most often favored by captains and other anglers who fish daily on the big ponds.

Riviera Trolling Systems Inc. produces several planer board mast systems and both dual and triple collapsible planer boards ideally suited to the big water angler. Dual collapsible boards (DPB's) are an excellent choice for anglers who are targeting smaller species like walleye, kokanee, or coho and fishing up to four lines per side of the boat.

Riviera's top selling full size Triple Planer Board (TPB) folds for easy storage, just like their Dual Planer Boards (DPB).

Triple collapsible boards (TPB's) are most often used by anglers who are trolling at higher speeds, running maximum lines per side of the boat and also trolling with larger lures. Triple boards are popular with muskie, salmon and walleye anglers who target trophy sized fish.

No matter the boat or how an angler wants to mount these trolling tools, Riviera has the solution for fishing mast systems.

IN LINE BOARDS

During the last two decades the in line board has become a mainstream fishing method among trollers.

The OR12 can be fished at any trolling speed slow or fast making it popular with anglers who target a variety of species like walleye that are often trolled using slow speeds and/or muskie that are frequently targeted at the fastest trolling speeds.

The other less talked about advantage of in line boards is the high strike to landed fish ratio they deliver. With a planer board mast system the second a fish strikes and trips the line release, slack line is created depending on specie fished, speed being used and how fast you get to the rod to set the hook. Occasionally this momentary slack line allows fish to escape.

In line boards function differently, eliminating any slack line while fishing and fighting fish. The moment a fish strikes, resistance from the board insures that the fish will be hooked solidly. The harder the fish pulls the more the board works to hammer the hooks home.

While a fish is being fought on an in line board, there is a direct connection going on. As the angler slowly reels in the in line board, the fish is being reeled in at the same time. Eventually the board nears the boat and can be removed from the line. All during this process the fish is still experiencing resistance and the hooks remain firmly lodged in the fish.

Tournament anglers have adopted in line boards because most of the fish that bite are eventually landed, giving them a clear edge. From the second a fish bites until the landing net is slipped into the water, the fish never experiences any slack when an in line board is used.



Pro Staffer, Larry Lambert, shows how simple it is to set out an Off Shore Tackle OR12 Side Planer that he modified with an OR18 Snapper Release on the tow arm coupled with the OR12TF Tattle Flag Upgrade Kit.

MINI PLANER BOARDS

If in line boards like the OR12 have any shortcomings it's the fact the resistance they create while reeling them in detracts from the enjoyment of fighting fish. Enter the OR34 Mini Planer Board stage left. Half the size of the standard OR12, the OR34 is lightweight and is designed to be fished using lighter action rods, lines and lures.

Designed with crappie fishing in mind, the OR34 has quickly become popular with river anglers who fish from shore and use these Mini Boards to reach out and target steelhead and other trout species. The OR34 is also gaining popularity with walleye anglers who frequently troll with stick baits or other small crankbaits that have little drag or resistance in the water. Other applications for the OR34 include trolling for trout on in-land lakes, pike in the spring time when they are found in shallow water bays and even for targeting post-spawn smallmouth bass that love to slurp up small crankbaits.

In short, the OR34 is a niche board that is finding more and more applications as anglers discover how convenient and fun these boards are to fish.

SUMMING IT UP

This article only scratches the surface regarding the ways planer boards can be used to catch more fish. The goal here is to outline the types of planer boards available and give anglers some general suggestions as to how these various products are most commonly used.

Perhaps the coolest thing about trolling is the realization that no single method works all the time or for every angler. Having options and adding our own personal touches to those options is part of what makes trolling such an interesting way to fish.

Thankfully when the topic turns to planer board fishing Off Shore Tackle and Riviera Trolling Systems produce all the boards and accessory items needed to catch literally anything that swims.



This OR34 Mini Planer Board works as a Double Agent that allows the consumer to run it on either the port or starboard side by simply reversing the position of the bracket.

HEY WATCH WHERE YOU'RE GOING KID

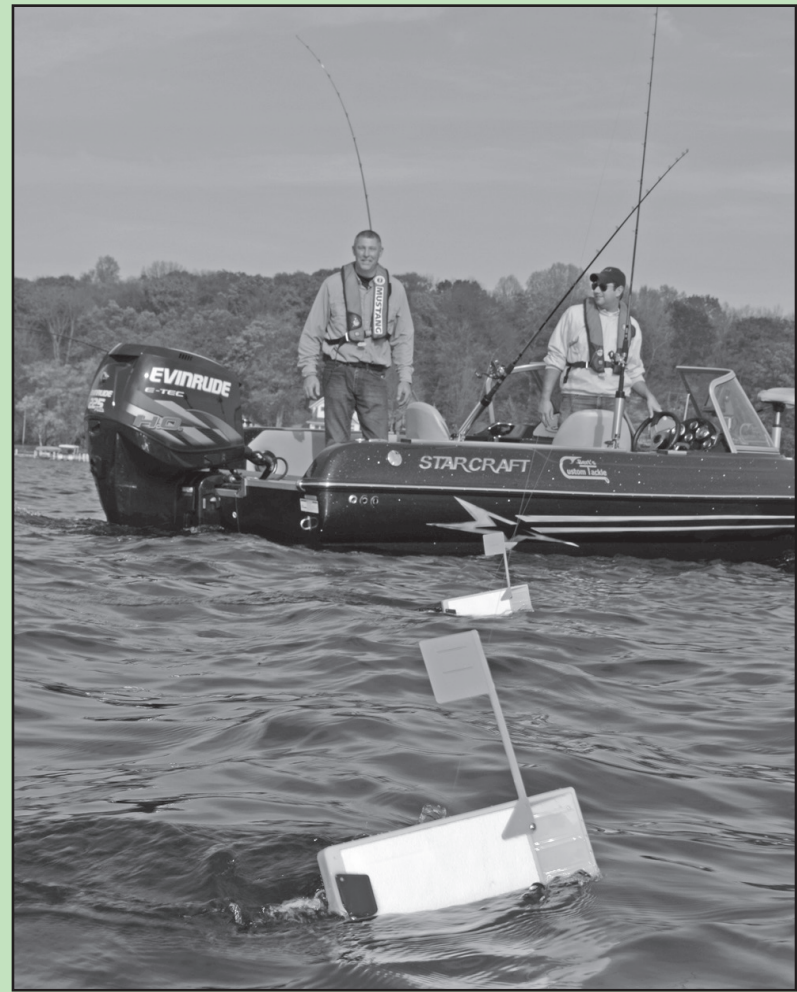
BY CAPTAIN BEN MILOSEVIC
Team BRD & Director for the Harbor Beach CanIcan Fishing Tournament

I have been fishing Lake Huron since the mid 1980's. Many casts off the break wall with my father and grandfather landing 15-20 lb salmon is how my obsession began. We started on the pier with a 3x3 flat surface boulder to a 19ft fishing machine with 2 Riviera Manual Downriggers and 2 dipsy rod's. At 18 years old, I was tickled pink that I was among a flurry of boats chasing salmon in deeper waters off Harbor Beach, Michigan. Long gone was the "Hey, that's my rock", now introduced to "Hey watch where you're going kid"! I grab my binoculars to see why the radio is barking nasty remarks about our 18 foot boat and I see these little yellow things in the water; that's when I was introduced to Off Shore Tackle Side Planers. Upon pulling the boat home that afternoon, my brother and I stopped into a small tackle shop to purchase a couple of those little yellow things. It was in line love at second sight! Both my brother and I were still in school with limited income we had to split the cost of them. I believe Elaine, the owner of that particular tackle shop, heard us talking and as when we got to the counter, she said that that day was our lucky day! She said, "The sign up front says Buy One, Get One Free". We were excited knowing our catch ratio just went from good to better. As we walked out of the bait shop we looked for that BOGO sign and didn't see it.... It took me a week or so to understand that it was just a pay forward gesture from her and never forgot that.

Times have changed since then, now we are fishing on a larger rig with all the bells and whistles. Added to this vessel are many of the Off Shore Tackle Side Planers that were introduced to me as a kid. At times we run up to 15 rods with the assistance of the OR12's to help increase our catch ratio. We also use Riviera Triple Planer Boards (TPB's) and Riviera Planer Board Mast System on days with increased wave activity. With the Off Shore boards, we pull 2-10 colors of lead core line on nice calm days as we believe it helps with the individual action to the lure. With waves in the forecast, we will tend to run the Riviera Mast and Triple Board System. The trolling boards unique in their way help stabilize our program in rougher waters. Lately, we have introduced copper line to both the Off Shore & Riviera boards to

allow us to get down deeper and found the boards hold their ground. Our newer set up for skinny water fishing in the spring & fall are the Off Shore OR36 Tadpoles. These little things are the trick to close combat fishing along our shorelines. Keeping the lures close and getting the depths we desire is key for our program. These Tadpoles are versatile; when we are not targeting salmon and trout in spring or fall, we use them in the summer trolling for walleye.

I have met some wonderful people in the fishing society over the years. Included are fishing captains, tackle stores and the owners of Off Shore Tackle & Riviera Trolling Systems. My love for fishing the Great Lakes and meeting people with the same interests influenced me to jump on an opportunity to be the co-coordinator of the Harbor Beach CanIcan fishing tournament back in 2006. Since then I became the tournament director and brought on a partner, Dave Pryor. We now run one of the largest 1 day salmon and trout tournaments in Lake Huron. With Mr. Pryor's help along with the Harbor Beach Parks & Recreation, we have had tremendous support and growth in this event. With over 60 sponsors on board for cash and prizes and our major contributor Tri-County Equipment from Sandusky, Michigan, we were able to pay out over \$15,000 in cash prizes along with over \$16,000 in product prizes from 6th-10th place and raffle table prizes. Included are four categories of big fish prizes worth \$250 each in which, Off Shore Tackle took part in with Guideline Mechanical, Anderson's Pro Bait & Finlander Charters sponsoring the other 3. I asked the winner of the 2012 tournament on stage what his secret was to cashing in on the \$7,187.00 1st prize and he neglected to remember exactly what his key to success was. However, there is no fooling me on his



secret. Mr. Bob K and his crew invited me to fish with him in a Frankfort event that we took 1st place in 2011. Those same Off Shore Side Planers that I almost ran over in the 1980's were also being used on his boat. The best part for the "Getaway Team" was the people yelling at him praise and congratulations versus the yelling over channel 68 saying "Hey, watch where you're going kid!"

For more information on the Harbor Beach CanIcan please visit our website at www.hbcan2can.com or Facebook for Harbor Beach CanIcan Fishing Tournament.

OLD DOGS — CONTINUED FROM PAGE 4



Even young pups like Nick DeShano, Vice Chairman of the Boards, is always trying out new innovations that would complement the Off Shore Tackle product line to keep us Your Leader In Trolling Technology.

A good friend, John Mundrala, was just giddy about using this diving weight system while trolling for walleye. I finally got on the Tadpole Train and I'm very glad I did!"

"The Tadpole is so efficient because you can run it out on four different lines covering completely different variations as you seek the pattern," he states. "Even if you have determined a bite, but there are a few different things going on, you can stagger the Tadpoles to reach both the higher and lower biting fish. By dividing the water column in ¼'s you can appeal to active fish at every depth, which simply translates into more bites."

"While this approach has its applications just as a standard trolling spread," he continues. "But it's also a fine-tuned search method that allows you to easily replicate the most productive line. The great thing about these Tadpoles is how simply and quickly you can change your desired depth through the use of a Coast Lock Snap."

"It's just a versatile way to reach assorted depths. You can go 30-60-90-120, 10-20-30-40, or 5-10-15-20 depending on the body of water you are fishing," Skarlis says in reference to feet-of-line increments. "If you're curious as to the specific depths the

Tadpoles will dive based on the amount of line they are attached to. Visit the Dive Charts page at www.offshoretackle.com to view the Tadpole depth chart."

These weights are designed to dive in order to achieve the desired lure running depth, but when a fish hits, it trips the Tadpole and the snap slides to the front so it will no longer dig into the depths making it a cinch to reel in a fish.

"A plethora of bait presentations work well with Tadpoles," he says. "You name it, cranks, spinners, spoons, etc., run on a flat line, a planer board, anything! The key is to experiment with different speeds and line-length combinations. Once you have determined their preference, duplicate!"

"I went from a 'Doubting Thomas' to a 'Very Happy Tommy'," he jokes. "Some anglers might get intimidated by the large amount of new gear that hits the scenes every year. But if they pay close attention to aspects of their fishing that might need a tweak or dynamic adjustment, chances are good that a product already exists or is in the process of being developed. The key is to remain open and always willing to grow with the rapidly advancing game of fishing. Off Shore (OR20 Series) Guppies and (OR36 Series) Tadpoles have a permanent spot in my boat, and I'm glad this old dog adapted."

LEAD CORE OR WIRE TIP

When wanting additional depth with lead core or wire, put an OR20 Series Guppy Pro Snap Weight on the backing after letting out the line. Then refer to the dive curve chart (available at www.offshoretackle.com) and determine how much additional line you want to let out. Add the depth the lead core or wire will go onto the depth the Guppy goes. This lets you take the Guppy off while the fish is still a long way out and helps prevent loss of the Guppy Weight.

GETTING THE MOST FROM PLANER BOARD RELEASES



The only thing a planer board angler hates worse than a false release is a release that won't trip! Because no two trolling situations are exactly the same, Off Shore Tackle has developed a complete line of planer board line releases suitable for catching everything from eating sized walleye to trophy class muskie, striper and saltwater species.

BY MARK ROMANACK

Anyone who has fished with a planer board and mast system understands the necessity of using quality planer board line releases. The line release and how fluidly it functions is what makes planer board trolling effective in the first place.

OR10 ADJUSTABLE LIGHT TENSION PLANER BOARD RELEASE

The OR10 (small yellow) is one of the most popular line releases ever developed. Designed with walleye fishing in mind, the OR10 has just enough tension to insure solid hook sets when trolling crankbaits and spoons for walleye, yet the tension is light enough that the fish typically trips the release upon striking. This popular release has built-in tension adjustment by simply sliding the spring into the forward position to increase the tension or into the back setting to reduce the tension setting.

OR14 ADJUSTABLE MEDIUM TENSION PLANER BOARD RELEASE

The OR14 (small black) Medium Tension Release is popular with walleye anglers who troll deep diving crankbaits and/or diving planers like the Jet Diver that is so popular on Lake Erie. The added tension insures no false releases and solid hook ups on all sizes of walleye.

Like the OR10, the OR14 features adjustable tension by sliding the spring forward to increase tension and backwards to reduce tension. A small screw driver blade is the idea tool for sliding the spring forward or back.

OR3 LIGHT TENSION PLANER BOARD RELEASE

The OR3 (large white) Light Tension Planer Board Release has a greater surface area in the rubber pads, making it the ideal choice for fishing in rough water or at higher trolling speeds. Ideal for Great Lakes style walleye fishing, the OR3 is also a perfect release for spring coho, brown trout, inland trout, kokanee and pink salmon fishing.

OR19 HEAVY TENSION PLANER BOARD RELEASE

The OR19 (small orange) Heavy Tension Planer Board Release was designed for trolling larger lures and at faster trolling speeds. Pike and muskie anglers find the OR19 a good general purpose line release and this release is also ideal for near shore saltwater trolling applications. The OR19 also functions well for targeting salmon and steelhead in the Great Lakes.

OR17 MEDIUM TENSION PLANER BOARD RELEASE

The OR17 (large black) Medium Tension Planer Board Release is the same release used on the popular OR1 Downrigger Release. Ideal for planer board applications targeting king salmon, this release can also be used for targeting trophy lake trout or for light duty saltwater trolling chores.

OR30 HEAVY TENSION PLANER BOARD RELEASE

The OR30 (large red) Heavy Tension Planer Board Release is the commiserate favorite among muskie and big game saltwater anglers who troll at speeds up to six knots. Designed to handle big lures and fast trolling speeds, the double spring design of this release insures solid hook sets even in the most difficult to hook species.

PACKAGING

Depending on the type of release and who is using it, planer board releases are purchased by the package or in bulk. The OR10 and OR14 come four in a package; the OR3 and OR19 come two in a package; the other's come in yet different quantities – see the order blank in this newspaper or visit Off Shore online at www.offshoretackle.com. All of these release models are also sold in bulk lots for the charter captain, tournament pro or serious angler who knows that you can never have too much of a good thing.

DISCLAIMER

Product features, opinions, and/or individual's contact information may have changed since these articles were originally composed.